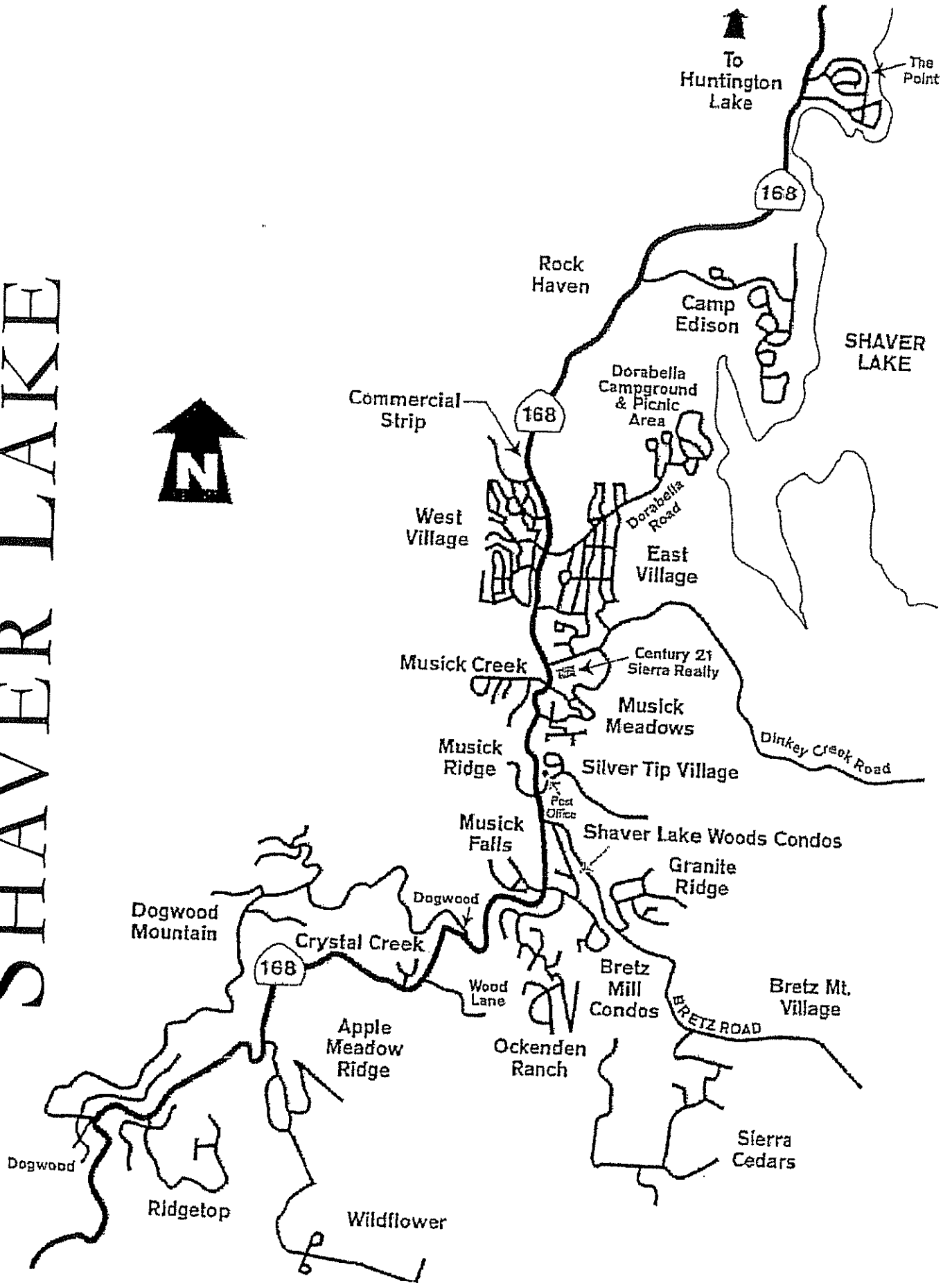
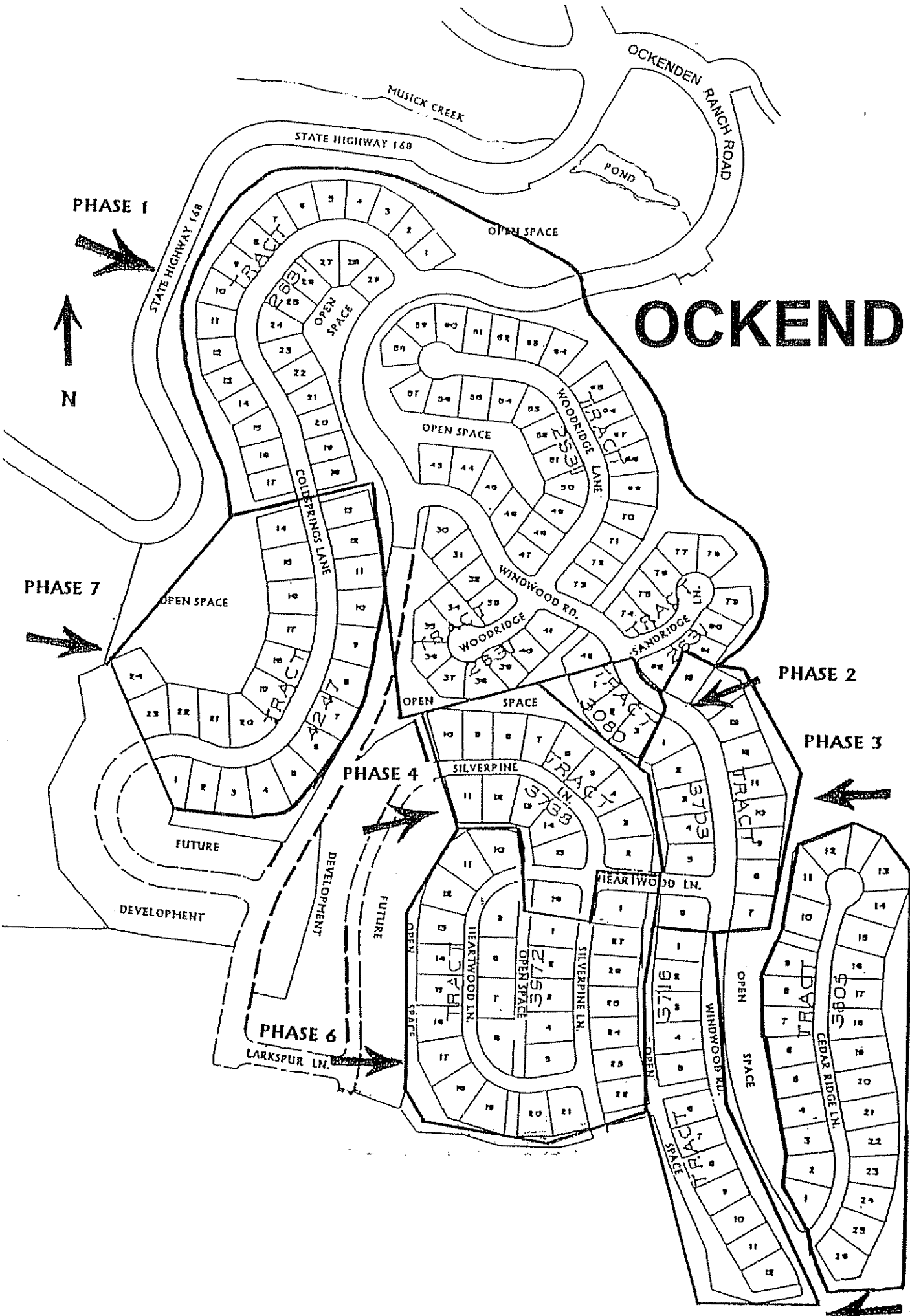


# SHAVER LAKE



# OCKENDEN



PHASE 1



STATE HIGHWAY 168

MUSICK CREEK

STATE HIGHWAY 168

OCKENDEN RANCH ROAD

POND

OPEN SPACE

TRACT

TRACT

TRACT

TRACT

TRACT

TRACT

TRACT

TRACT

TRACT

TRACT

TRACT

TRACT

TRACT

TRACT

TRACT

TRACT

PHASE 2

PHASE 3

PHASE 4

PHASE 6

PHASE 8

PHASE 5

OPEN SPACE

OPEN SPACE

OPEN SPACE

FUTURE

DEVELOPMENT

FUTURE

OPEN SPACE

SILVERPINE

HEARTWOOD LN.

HEARTWOOD LN.

HEARTWOOD LN.

HEARTWOOD LN.

HEARTWOOD LN.

HEARTWOOD LN.

HEARTWOOD LN.

HEARTWOOD LN.

HEARTWOOD LN.

HEARTWOOD LN.

HEARTWOOD LN.

HEARTWOOD LN.

HEARTWOOD LN.

HEARTWOOD LN.

HEARTWOOD LN.

HEARTWOOD LN.

HEARTWOOD LN.

HEARTWOOD LN.

HEARTWOOD LN.

HEARTWOOD LN.

HEARTWOOD LN.

HEARTWOOD LN.

HEARTWOOD LN.

HEARTWOOD LN.

HEARTWOOD LN.

HEARTWOOD LN.

HEARTWOOD LN.

HEARTWOOD LN.

HEARTWOOD LN.

HEARTWOOD LN.

HEARTWOOD LN.

HEARTWOOD LN.

HEARTWOOD LN.

HEARTWOOD LN.

HEARTWOOD LN.

HEARTWOOD LN.

HEARTWOOD LN.

HEARTWOOD LN.

HEARTWOOD LN.

HEARTWOOD LN.

HEARTWOOD LN.

HEARTWOOD LN.

HEARTWOOD LN.

HEARTWOOD LN.

HEARTWOOD LN.

HEARTWOOD LN.

HEARTWOOD LN.

HEARTWOOD LN.

HEARTWOOD LN.

HEARTWOOD LN.

HEARTWOOD LN.

HEARTWOOD LN.

HEARTWOOD LN.

HEARTWOOD LN.

HEARTWOOD LN.

HEARTWOOD LN.

HEARTWOOD LN.

HEARTWOOD LN.

HEARTWOOD LN.

HEARTWOOD LN.

HEARTWOOD LN.

HEARTWOOD LN.

HEARTWOOD LN.

HEARTWOOD LN.

HEARTWOOD LN.

HEARTWOOD LN.

HEARTWOOD LN.

HEARTWOOD LN.

HEARTWOOD LN.

HEARTWOOD LN.

HEARTWOOD LN.

HEARTWOOD LN.

HEARTWOOD LN.

HEARTWOOD LN.

HEARTWOOD LN.

HEARTWOOD LN.

HEARTWOOD LN.

HEARTWOOD LN.

HEARTWOOD LN.

HEARTWOOD LN.

HEARTWOOD LN.

HEARTWOOD LN.

HEARTWOOD LN.

HEARTWOOD LN.

HEARTWOOD LN.

HEARTWOOD LN.

HEARTWOOD LN.

HEARTWOOD LN.

HEARTWOOD LN.

HEARTWOOD LN.

HEARTWOOD LN.

HEARTWOOD LN.

HEARTWOOD LN.

HEARTWOOD LN.

HEARTWOOD LN.

HEARTWOOD LN.

HEARTWOOD LN.

HEARTWOOD LN.

HEARTWOOD LN.

HEARTWOOD LN.

HEARTWOOD LN.

HEARTWOOD LN.

HEARTWOOD LN.

HEARTWOOD LN.

HEARTWOOD LN.

HEARTWOOD LN.

HEARTWOOD LN.

HEARTWOOD LN.

HEARTWOOD LN.

HEARTWOOD LN.

HEARTWOOD LN.

HEARTWOOD LN.

HEARTWOOD LN.

HEARTWOOD LN.

HEARTWOOD LN.

HEARTWOOD LN.

HEARTWOOD LN.

HEARTWOOD LN.

HEARTWOOD LN.

HEARTWOOD LN.

HEARTWOOD LN.

HEARTWOOD LN.

HEARTWOOD LN.

HEARTWOOD LN.

HEARTWOOD LN.

HEARTWOOD LN.

HEARTWOOD LN.

HEARTWOOD LN.

HEARTWOOD LN.

HEARTWOOD LN.

HEARTWOOD LN.

HEARTWOOD LN.

HEARTWOOD LN.

HEARTWOOD LN.

HEARTWOOD LN.

HEARTWOOD LN.

HEARTWOOD LN.

HEARTWOOD LN.

HEARTWOOD LN.

HEARTWOOD LN.

HEARTWOOD LN.

HEARTWOOD LN.

HEARTWOOD LN.

HEARTWOOD LN.

HEARTWOOD LN.

HEARTWOOD LN.

HEARTWOOD LN.

HEARTWOOD LN.

HEARTWOOD LN.

HEARTWOOD LN.

HEARTWOOD LN.

HEARTWOOD LN.

HEARTWOOD LN.

HEARTWOOD LN.

HEARTWOOD LN.

HEARTWOOD LN.

HEARTWOOD LN.

HEARTWOOD LN.

HEARTWOOD LN.

HEARTWOOD LN.

HEARTWOOD LN.

HEARTWOOD LN.

HEARTWOOD LN.

HEARTWOOD LN.

HEARTWOOD LN.

HEARTWOOD LN.

HEARTWOOD LN.

HEARTWOOD LN.

HEARTWOOD LN.

HEARTWOOD LN.

HEARTWOOD LN.

HEARTWOOD LN.

HEARTWOOD LN.

HEARTWOOD LN.

HEARTWOOD LN.

HEARTWOOD LN.

HEARTWOOD LN.

HEARTWOOD LN.

HEARTWOOD LN.

HEARTWOOD LN.

HEARTWOOD LN.

HEARTWOOD LN.

HEARTWOOD LN.

HEARTWOOD LN.

HEARTWOOD LN.

HEARTWOOD LN.

HEARTWOOD LN.

HEARTWOOD LN.

HEARTWOOD LN.

HEARTWOOD LN.

HEARTWOOD LN.

HEARTWOOD LN.

HEARTWOOD LN.

HEARTWOOD LN.

HEARTWOOD LN.

HEARTWOOD LN.

HEARTWOOD LN.

HEARTWOOD LN.

HEARTWOOD LN.

HEARTWOOD LN.

HEARTWOOD LN.

HEARTWOOD LN.

HEARTWOOD LN.

HEARTWOOD LN.

HEARTWOOD LN.

HEARTWOOD LN.

HEARTWOOD LN.

HEARTWOOD LN.

HEARTWOOD LN.

HEARTWOOD LN.

HEARTWOOD LN.

HEARTWOOD LN.

HEARTWOOD LN.

HEARTWOOD LN.

HEARTWOOD LN.

HEARTWOOD LN.

HEARTWOOD LN.

HEARTWOOD LN.

HEARTWOOD LN.

HEARTWOOD LN.

HEARTWOOD LN.

HEARTWOOD LN.

HEARTWOOD LN.

HEARTWOOD LN.

HEARTWOOD LN.

HEARTWOOD LN.

HEARTWOOD LN.

HEARTWOOD LN.

HEARTWOOD LN.

HEARTWOOD LN.

HEARTWOOD LN.

HEARTWOOD LN.

HEARTWOOD LN.

HEARTWOOD LN.

HEARTWOOD LN.

HEARTWOOD LN.

HEARTWOOD LN.

HEARTWOOD LN.

HEARTWOOD LN.

HEARTWOOD LN.

HEARTWOOD LN.

HEARTWOOD LN.

HEARTWOOD LN.

HEARTWOOD LN.

HEARTWOOD LN.

HEARTWOOD LN.

HEARTWOOD LN.

HEARTWOOD LN.

HEARTWOOD LN.

HEARTWOOD LN.

HEARTWOOD LN.

HEARTWOOD LN.

HEARTWOOD LN.

HEARTWOOD LN.

HEARTWOOD LN.

HEARTWOOD LN.

HEARTWOOD LN.

HEARTWOOD LN.

HEARTWOOD LN.

HEARTWOOD LN.

HEARTWOOD LN.

HEARTWOOD LN.

HEARTWOOD LN.

HEARTWOOD LN.

HEARTWOOD LN.

HEARTWOOD LN.

HEARTWOOD LN.

HEARTWOOD LN.

HEARTWOOD LN.

HEARTWOOD LN.

HEARTWOOD LN.

HEARTWOOD LN.

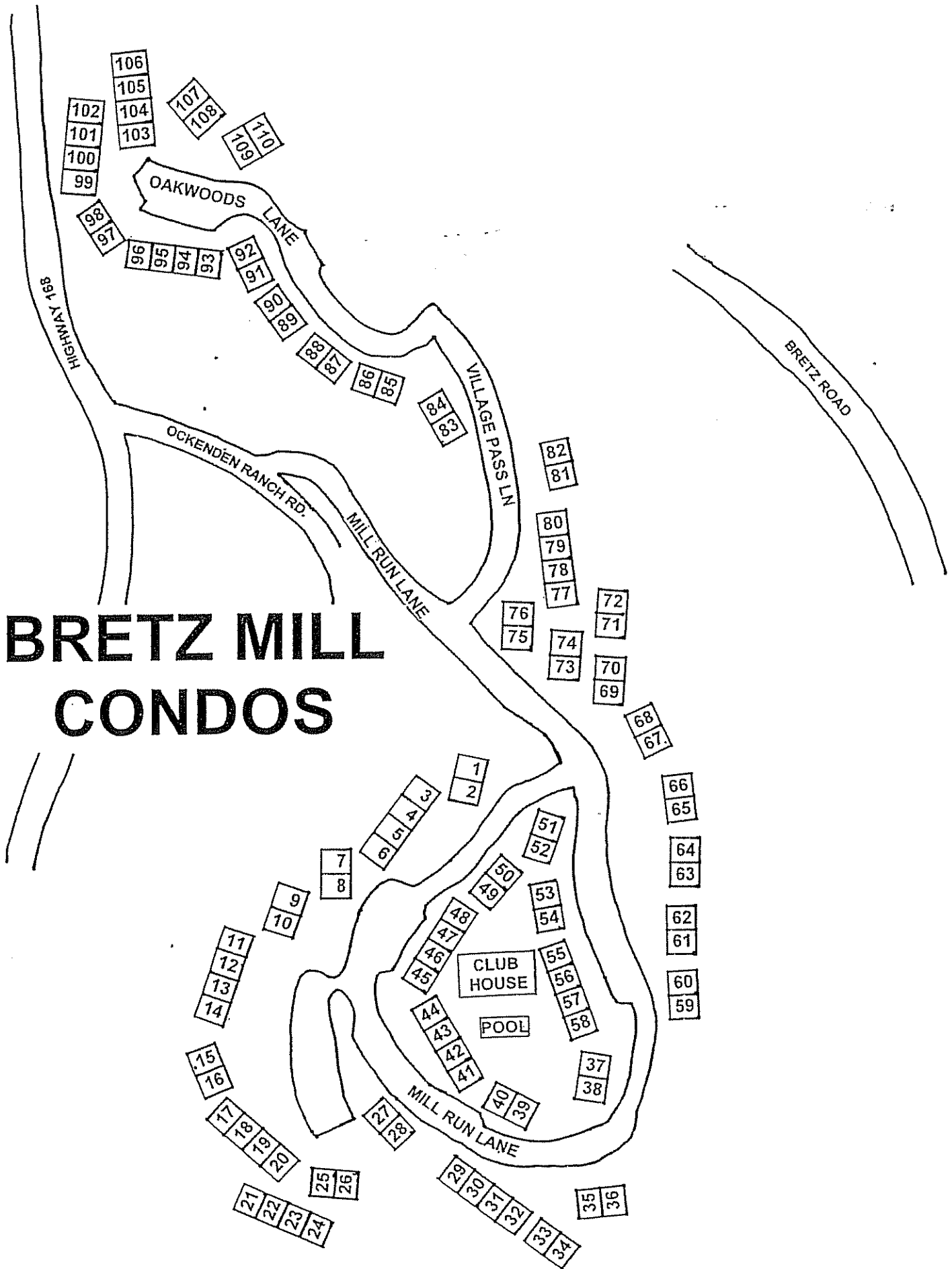
HEARTWOOD LN.

HEARTWOOD LN.

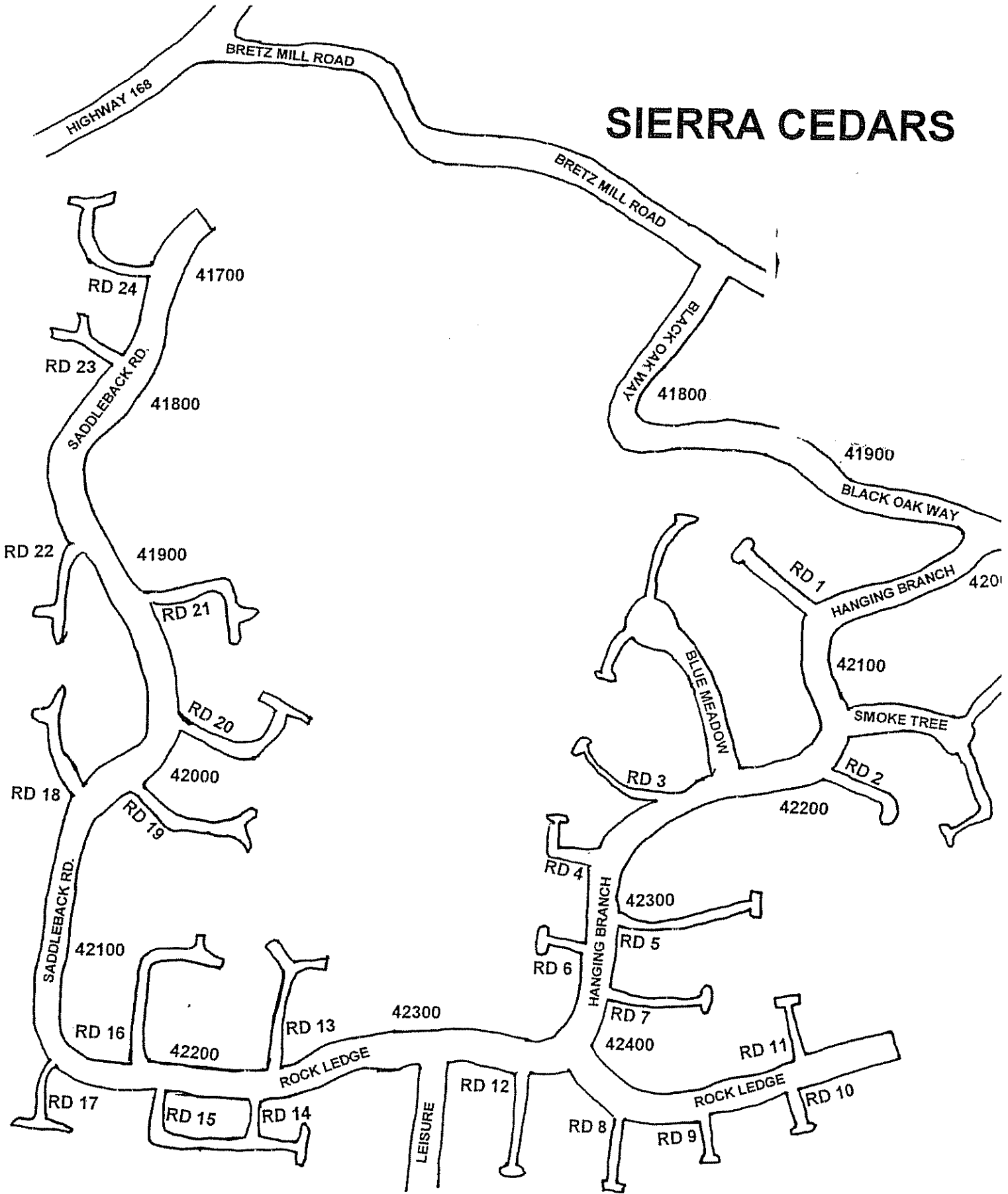
HEARTWOOD LN.

HEARTWOOD LN

# BRETZ MILL CONDOS

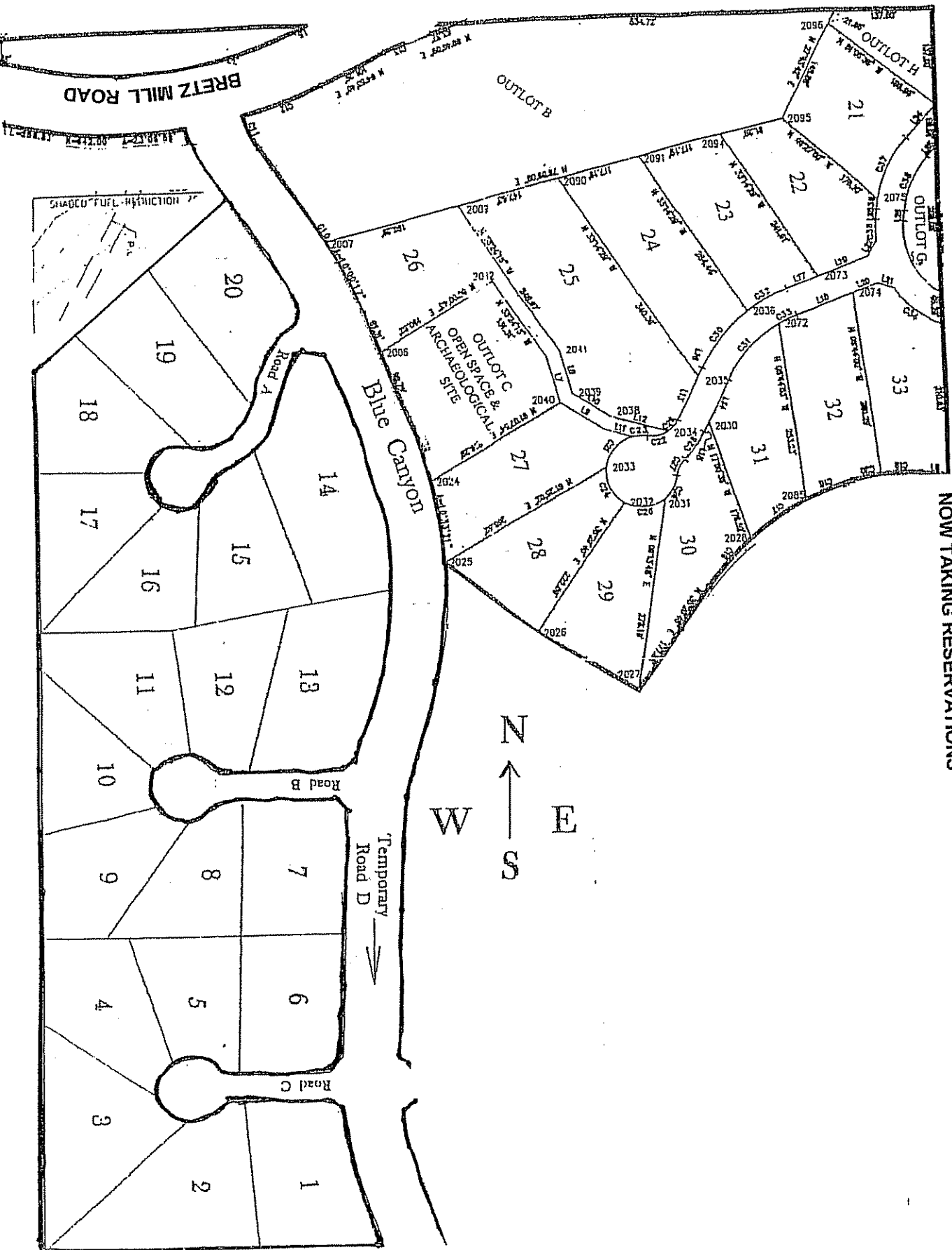


# SIERRA CEDARS

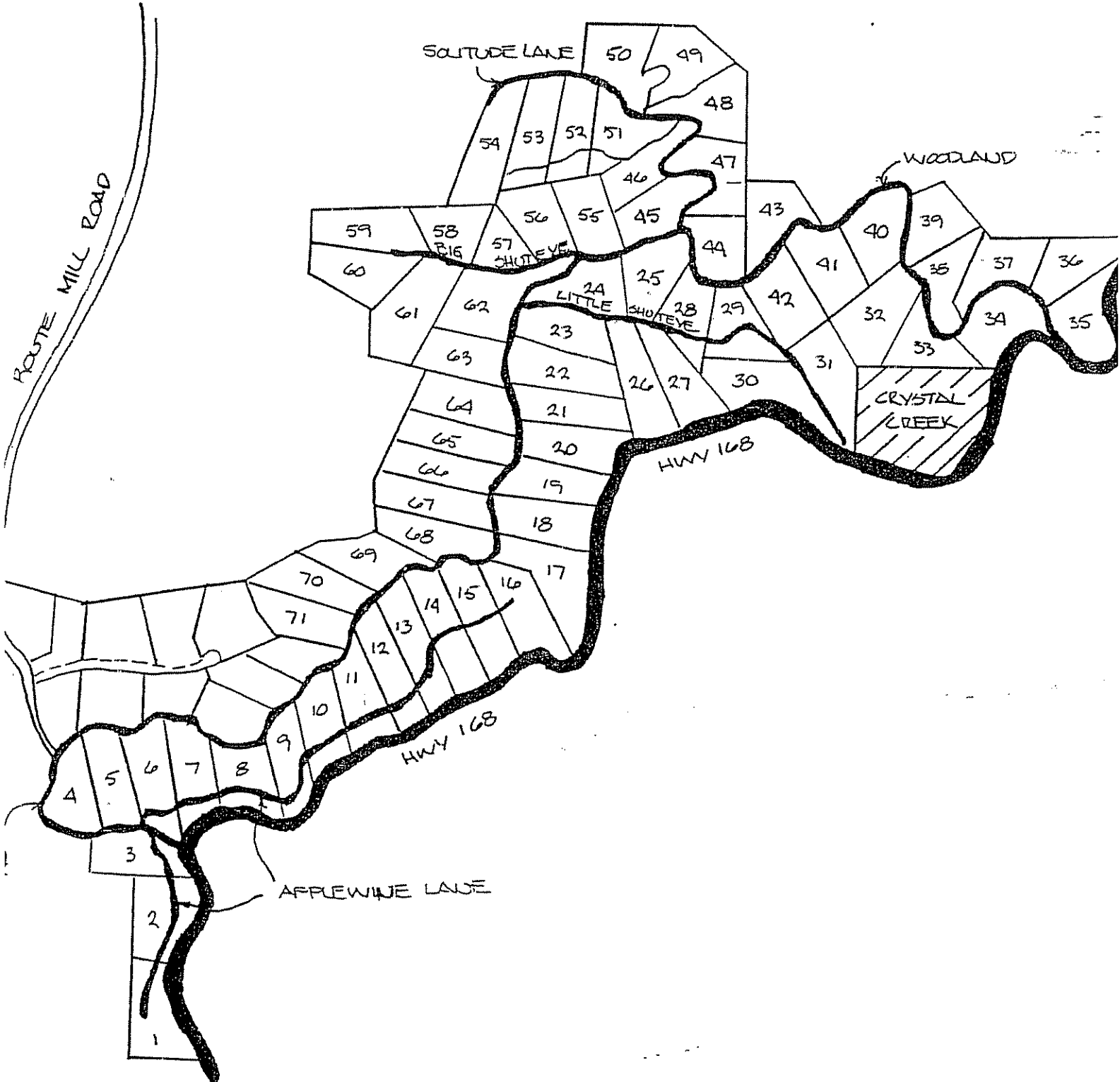


# BRETZ MOUNTAIN VILLAGE PHASE II

Directions: Take Hwy 168/Tollhouse to Bretz Mill Rd. Head East on Bretz Mill Rd.  
1.6 miles to Bretz Mountain Village.  
**NOW TAKING RESERVATIONS**



# DOGWOOD



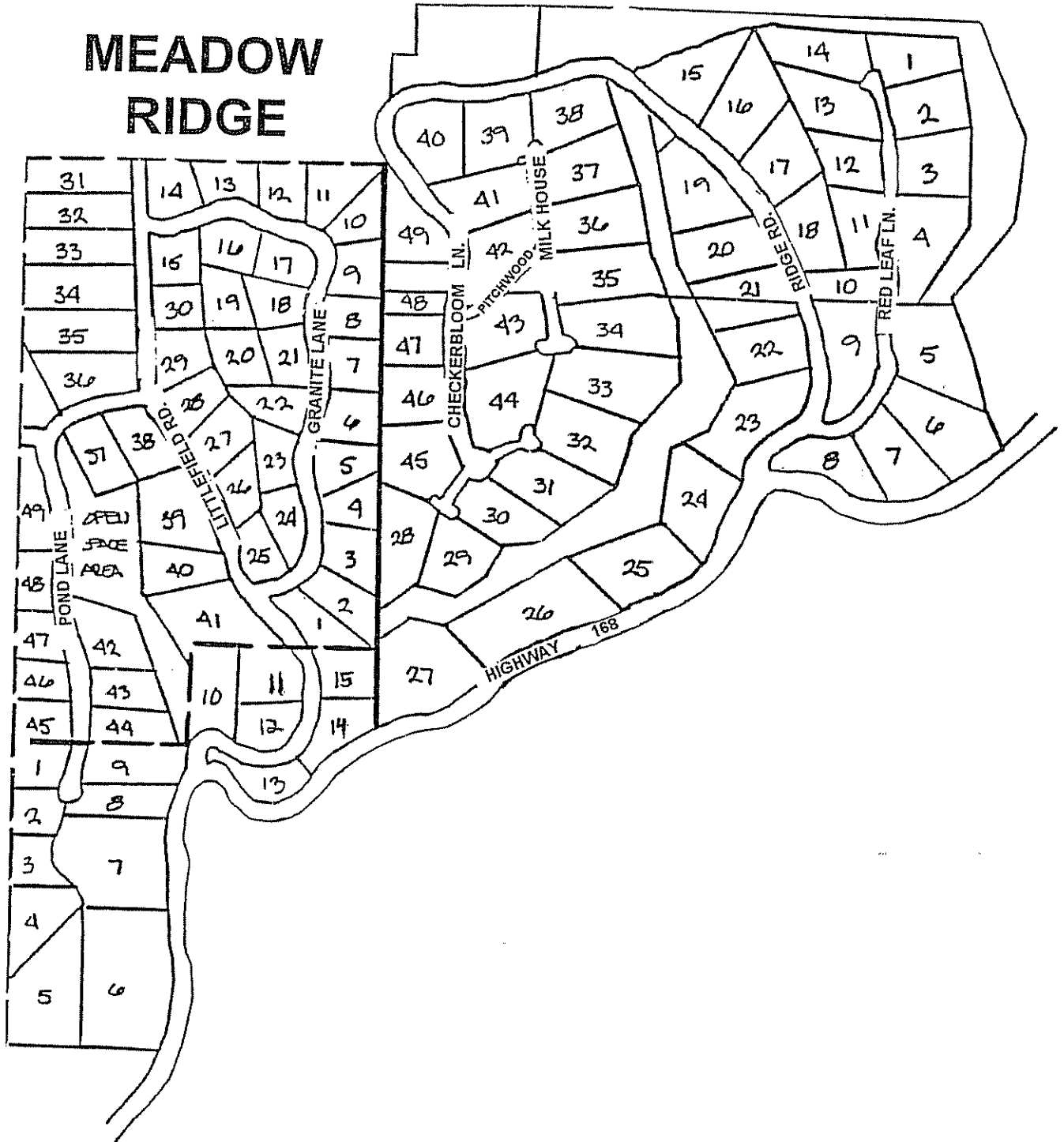


# APPLERIDGE

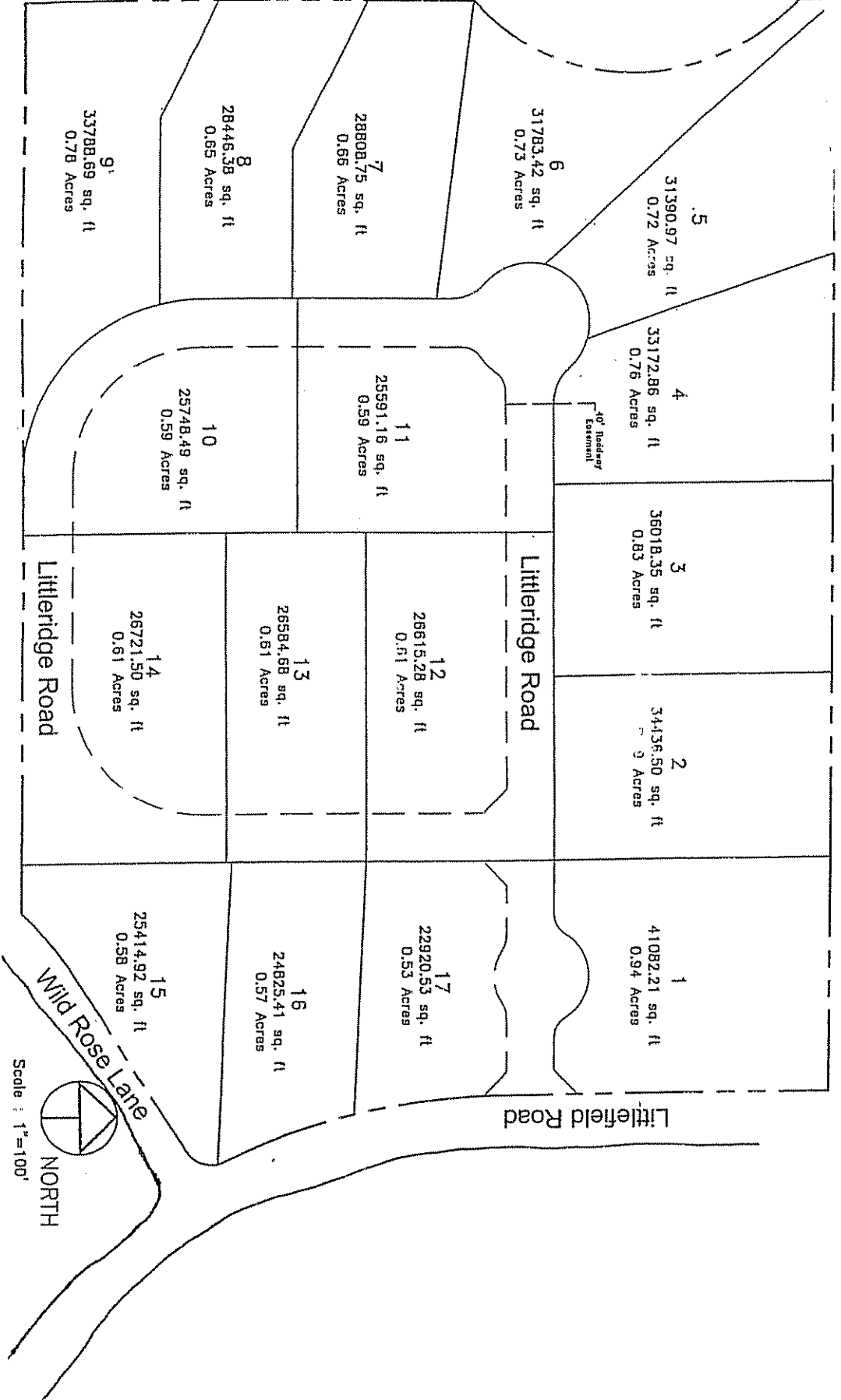
# RIDGETOP

&

# MEADOW RIDGE



# LITTLE RIDGE



Scale : 1"=100'

# TAMARACK

