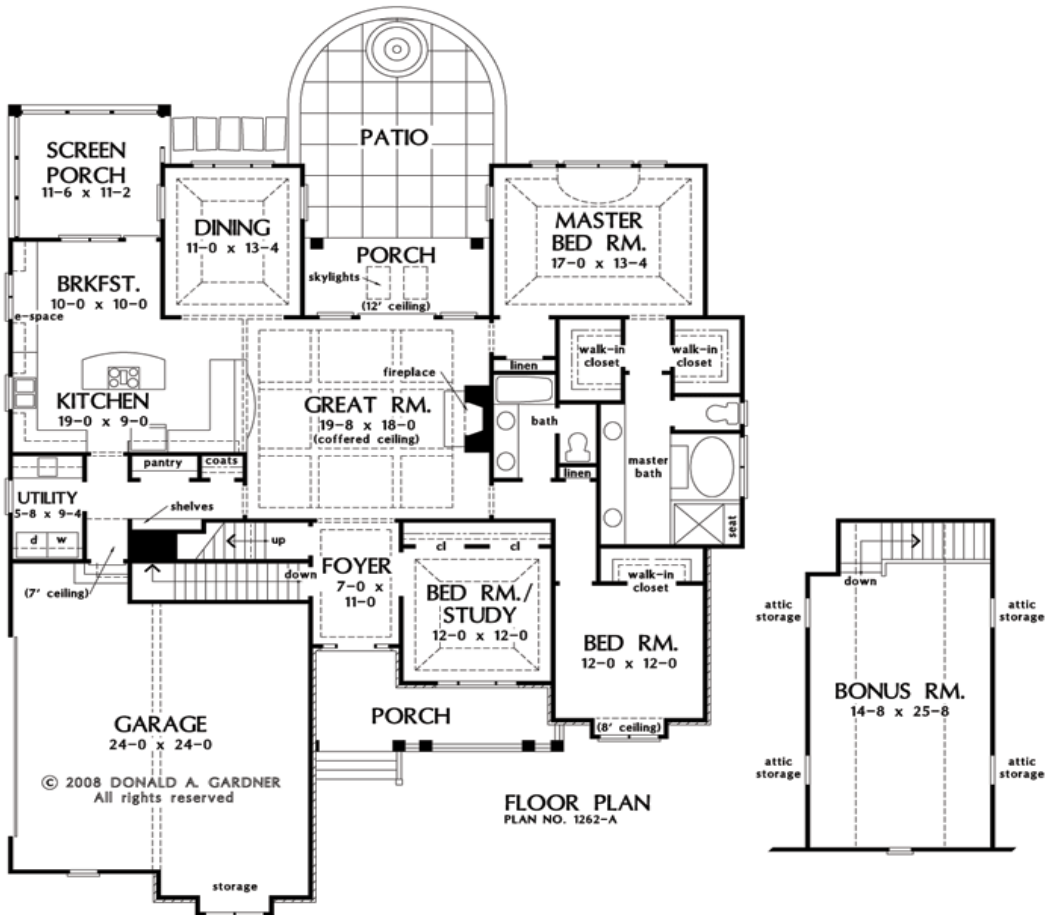


The Whitney

By: Donald A. Gardner

Plan No: W-GOO-1262



Features include full unfinished basement, fireplace, skylights, foyer, side-loading garage, formal dining, bedroom/study, walk-in closets, storage space, special ceiling treatments, full master suite, island kitchen, front porch, rear screened porch, dormers, and e-space.

Base pricing includes granite countertops, architectural shingles, Capital vinyl windows, vinyl siding, stone veneer, or stucco, and American Standard plumbing fixtures. Also covers Class 1 or Class 2 septic system and 1 well drilled to 300' depth.

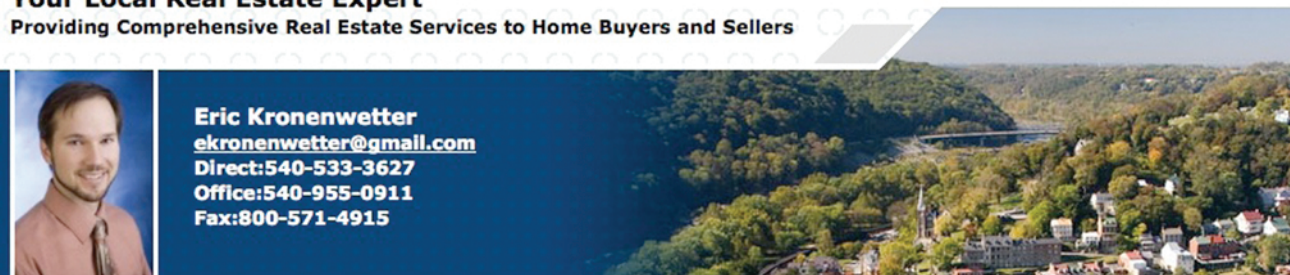
Total Square Footage:	2149
Bonus Room Square Footage:	386
Number of Stories:	1
Bedrooms:	3
Bathrooms:	2
Garage Bays:	2

Your Local Real Estate Expert

Providing Comprehensive Real Estate Services to Home Buyers and Sellers



Eric Kronenwetter
ekronenwetter@gmail.com
Direct: 540-533-3627
Office: 540-955-0911
Fax: 800-571-4915



CERTIFIED DISTRESSED
PROPERTY EXPERT™