



*Future Home of the
Maneuver Center of Excellence
Fort Benning, Georgia*

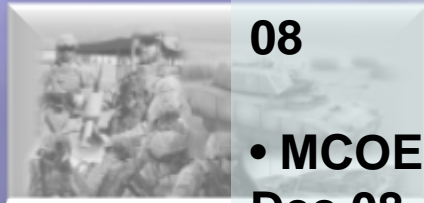
BRAC Community Update
2 December 2008



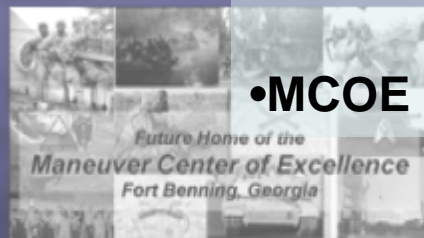
Train Soldiers



**Support the
Operating Force**



**Focus on the
Future**



**Transition to
MCOE**

Upcoming Events

- **MCOE Update to New Ft. Benning CG: MG Michael Barbero – 4 Dec 08**
- **MCOE Update to New TRADOC CG: LTG(P) Martin Dempsey – 11 Dec 08**
- **MCOE Update Mission Support Working Group: 9 Jan 09**
- **MCOE Mini-BOD at Fort Knox: 28-29 Jan 09**

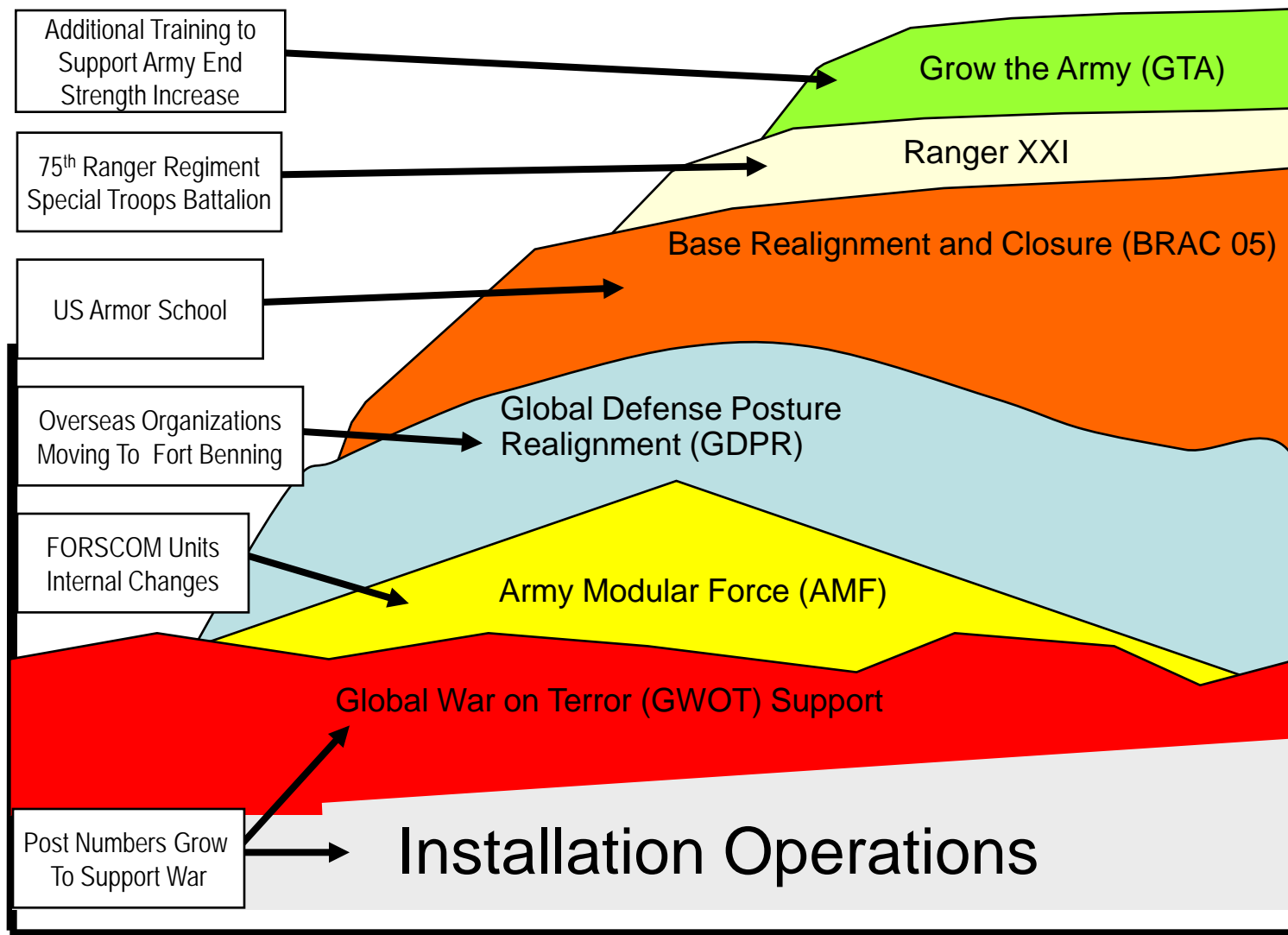
Transition to MCOE



Fort Benning Transformation



Events Affecting Fort Benning



Time

...an Opportunity To Set Conditions For Change



Fort Benning Impact Summary



Economic Impact

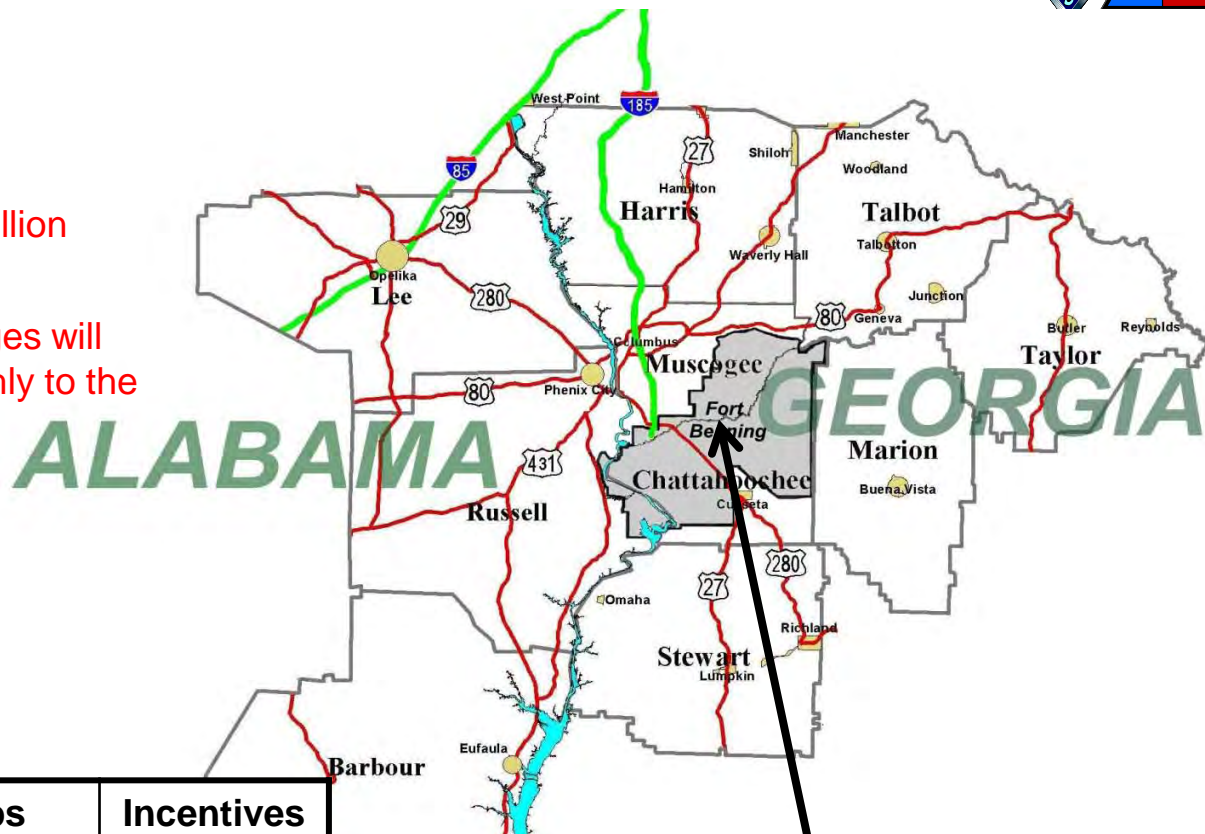
- One Of The US Army's Largest Training Installation
- Premier Deployment Platform Deploying Soldiers, Civilians, And Units Anywhere In The World By Air, Rail, Or Sea.
- Trains Members Of All The Armed Forces And Numerous Federal Agencies.
- Today, Fort Benning Salaries \$110 Million Monthly
- Today, Fort Benning Contracts \$250 Million Monthly
- Base Realignment And Closure (BRAC) and Other Military Structure Changes Will Generate \$25-\$35 Million More Each Month



Direct Impact to the Community



- ❑ Fort Benning contributes over \$100 Million monthly to the local economy today
- ❑ BRAC and other force structure changes will add an additional \$25 - \$35 Million monthly to the in the future with the MCOE



Project	Investment	Jobs	Incentives
KIA – West Point, GA	\$1.2B	2.9K	\$258.3M
Hyundai – Montgomery, AL	\$1.4B	2.0K	\$252.8M
ThyssenKrupp – Mobile, AL	\$3.7B	2.7K	\$811M
Ft. Benning	\$3.5B	11.0K – 13.0K	???

- \$3.5 billion in new construction
- 11,000 to 13,000 new jobs
- Total growth anticipated: 20,000 to 30,000 Soldiers, civilians, contractors, family members, and retirees



U. S. Army Approved Growth Estimates

(19 November 2008)



Growth Categories	Number Jobs	Number Spouses	Number Children	Number School Age Children	Number Total
Military Service Members: Permanent Change Of Station	4,712	2,733	4,386	2,771	11,831
Government Civilians: Permanent Change Of Station	1,889	1,511	1,451	1,096	4,851
Contractors	4,802	2,641	3,963	2,972	11,406
	Population + Spouses + Children =				Total Growth
Total	11, 403	6,885	9,800	6,839	28,088

Impact of Incoming Military & Department of Army Civilian Positions

**"Initial" Results of Researching Financial Impact
\$20,000,000 (+/-) Per Month**

Based on Draft
MCOE TDA pending
HQDA approval

MILITARY GRADE NET IMPACT		CIVILIAN GRADE NET IMPACT	
General Officer	+2	Senior Executive Service	+1
Colonel	+9	GS-15	+1
Lieutenant Colonel	+27	GS-14	+4
Major	+49	GS-13	+30
Captain	+123	GS-12	+52
Lieutenant (O1-O2)	+1153	GS-11	+109
Warrant Officer (W1-W5)	+9	GS-10	+17
Sergeant Major (E9)	+21	GS-09	+67
First / Master Sergeant (E8)	+76	GS-08	+115
Sergeant First Class (E7)	+527	GS-07	+112
Staff Sergeant (E6)	+976	GS-06	+61
Sergeant (E5)	+343	GS-05	+141
Corporal / Specialist (E4)	+269	GS-04	+70
Private First Class (E3)	+253	GS-01/03	+64

2LTs
\$52K Annual
RMC*

GS 11s
\$62K Annual

SSGs
\$51K Annual
RMC*

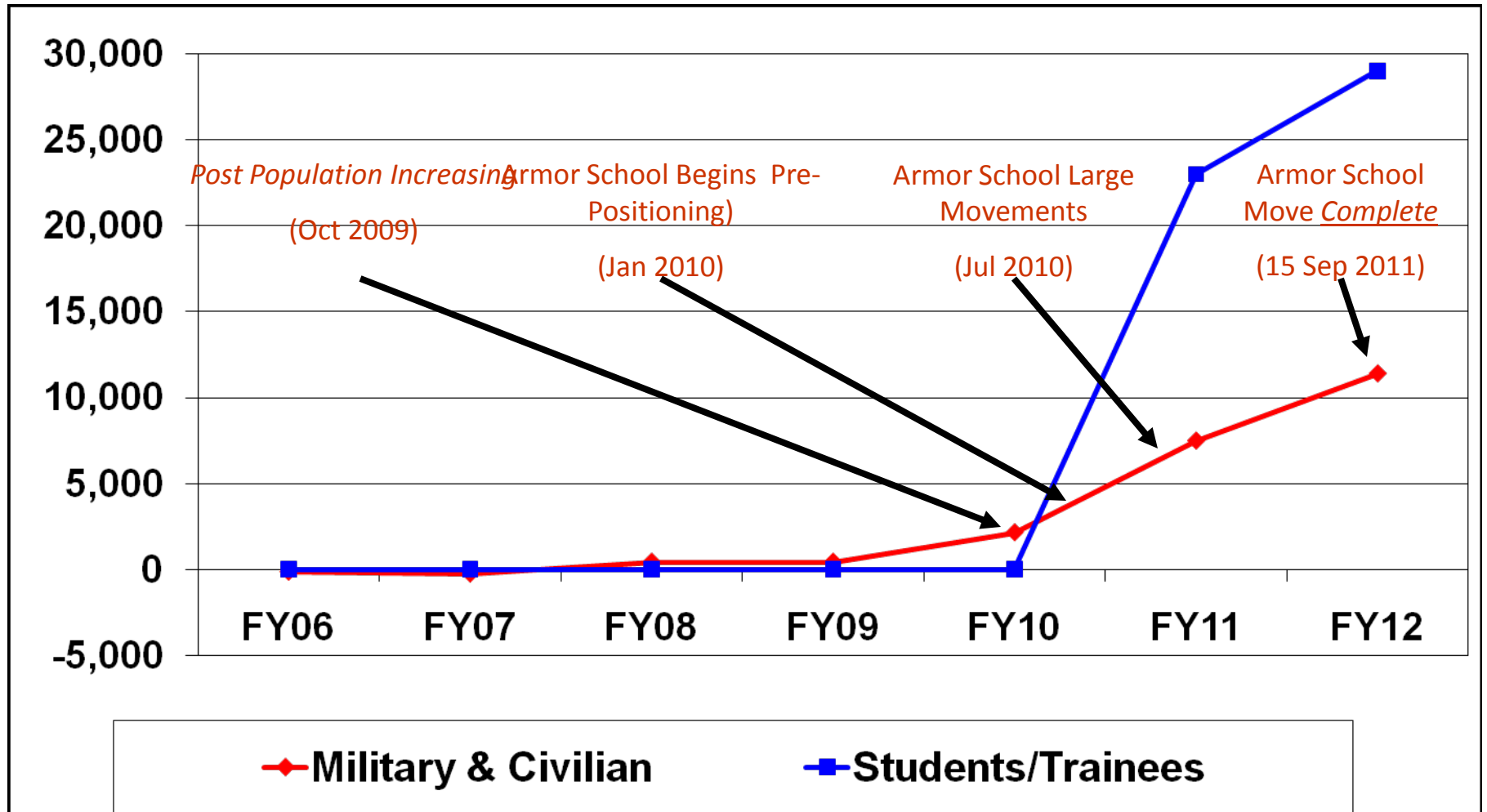
GS 08s
\$46K Annual

*RMC (Regular Military Compensation) includes annual base pay, allowances for food and housing, and the tax advantage from untaxed allowances.



Preparing For Growth Timeline

(28 October 2008)





Construction 2006-2016



TOTAL: \$3.5B

- BRAC/GDPR/AMF/MCA – \$2.9B
 - \$1.3B BRAC
 - \$1.4B MCA
 - \$200 SRM
- RCI - \$600M

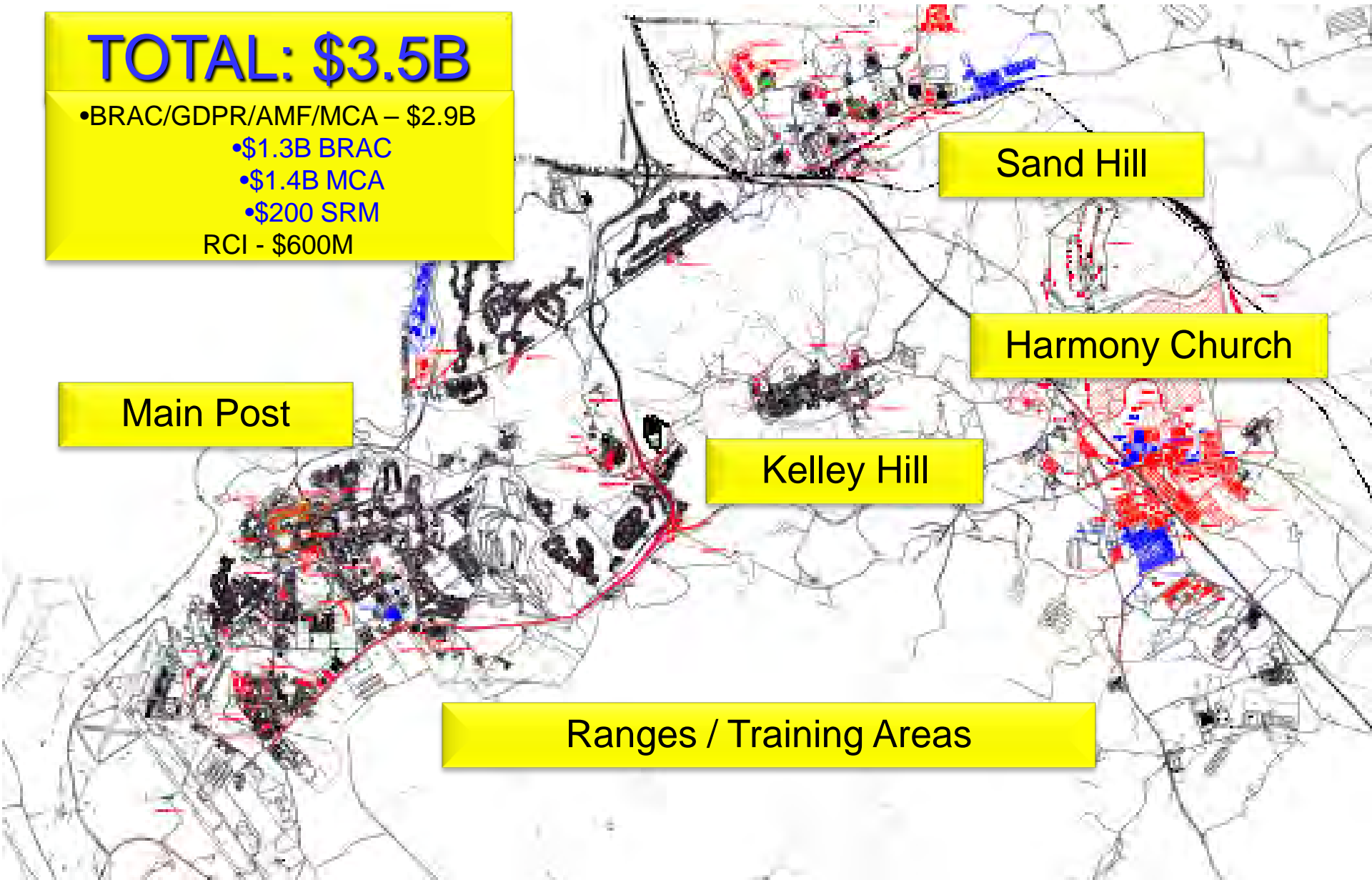
Main Post

Sand Hill

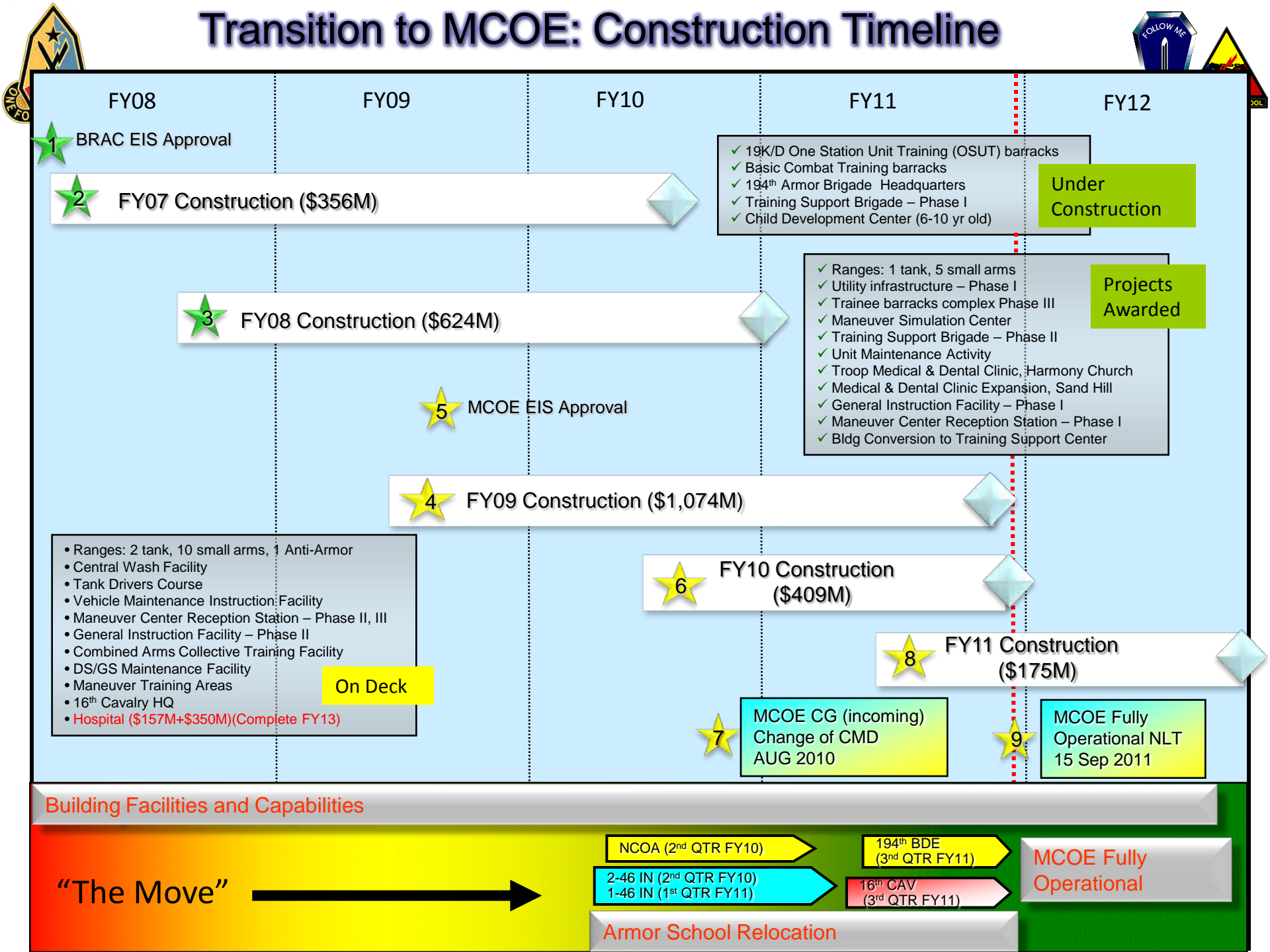
Harmony Church

Kelley Hill

Ranges / Training Areas



Transition to MCOE: Construction Timeline





Fort Benning MILCON



Number of Projects by FY									
	FY07	FY08	FY09	FY10	FY11	FY12	FY13	Total	\$MILCON
BCA	5	13	12	5	0	0	0	35	\$1,299M
MCA	0	5	21	13	6	5	3	53	\$1,405M
SRM	0	1	1	0	0	0	0	2	\$ 200M
Total	5	19	34	18	6	5	3	90	\$2,904M



Construction - Harmony Church



Headquarters, Admin, and
COFs, FY07 & 08

Barracks, & DFAC, FY 07 & 08
/ Gym FY11

Interchange &
Access Control
Point, FY09

Maintenance
Facilities, FY08
to FY11

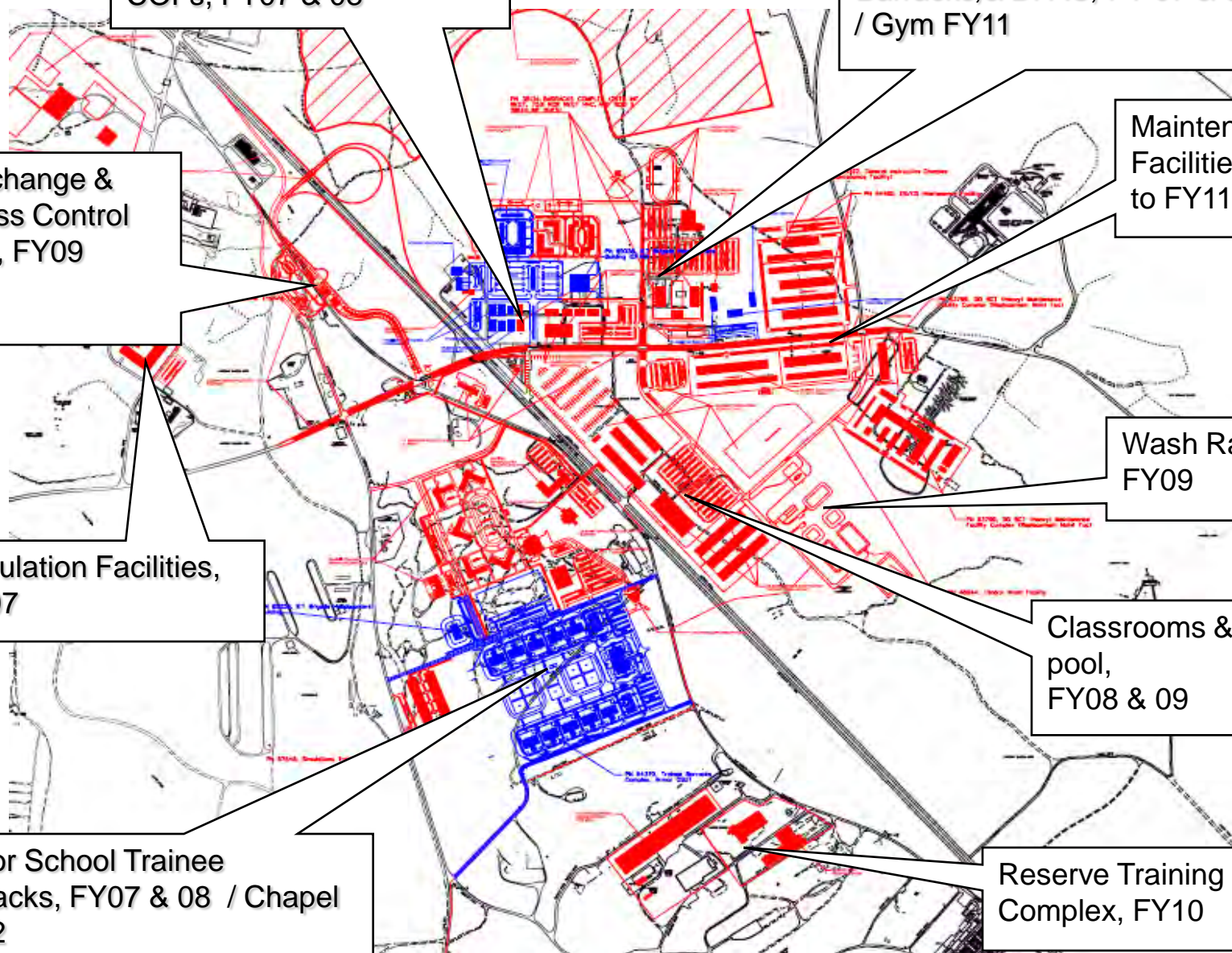
Simulation Facilities,
FY07

Wash Rack,
FY09

Classrooms & Motor
pool,
FY08 & 09

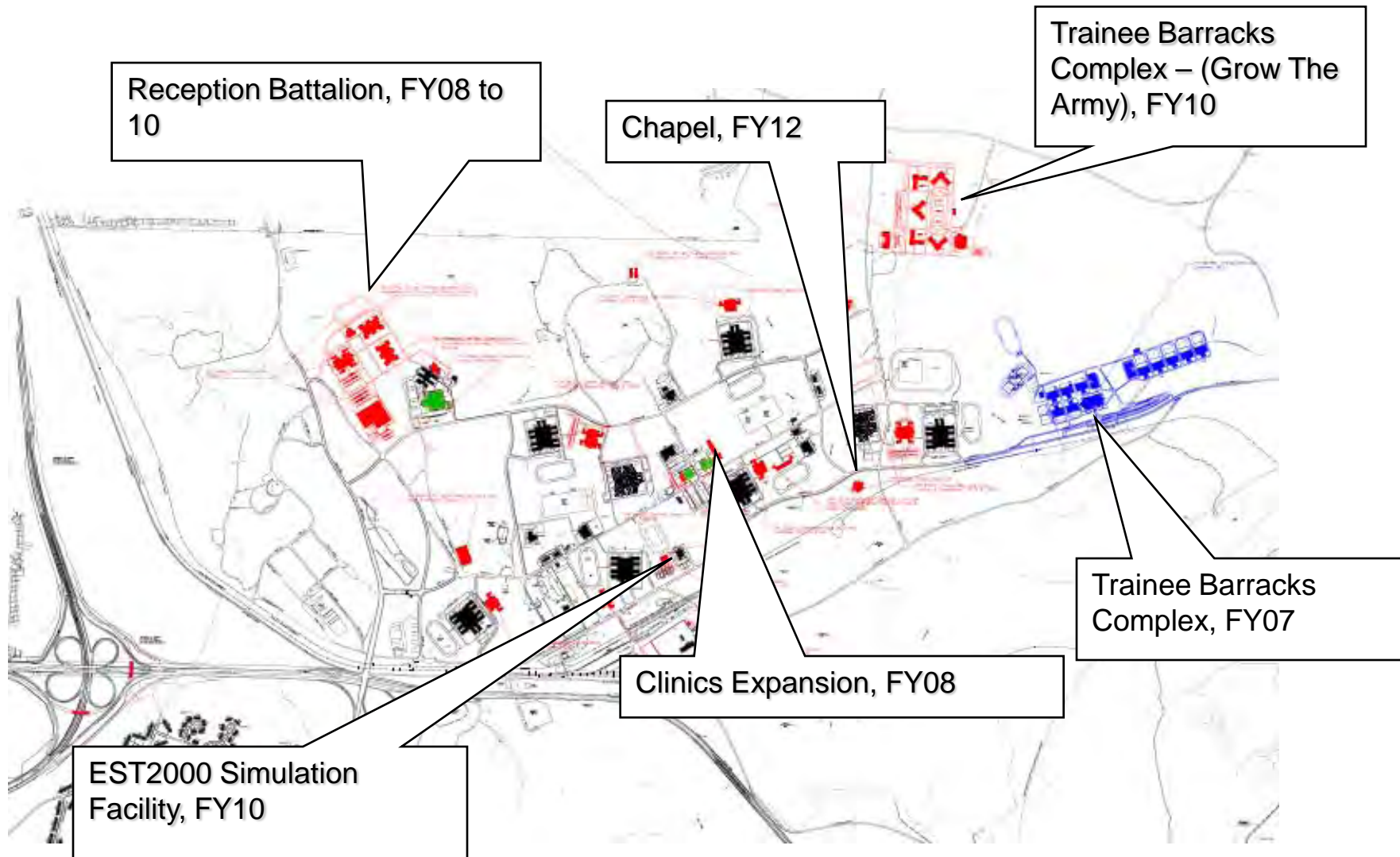
Armor School Trainee
Barracks, FY07 & 08 / Chapel
FY12

Reserve Training
Complex, FY10



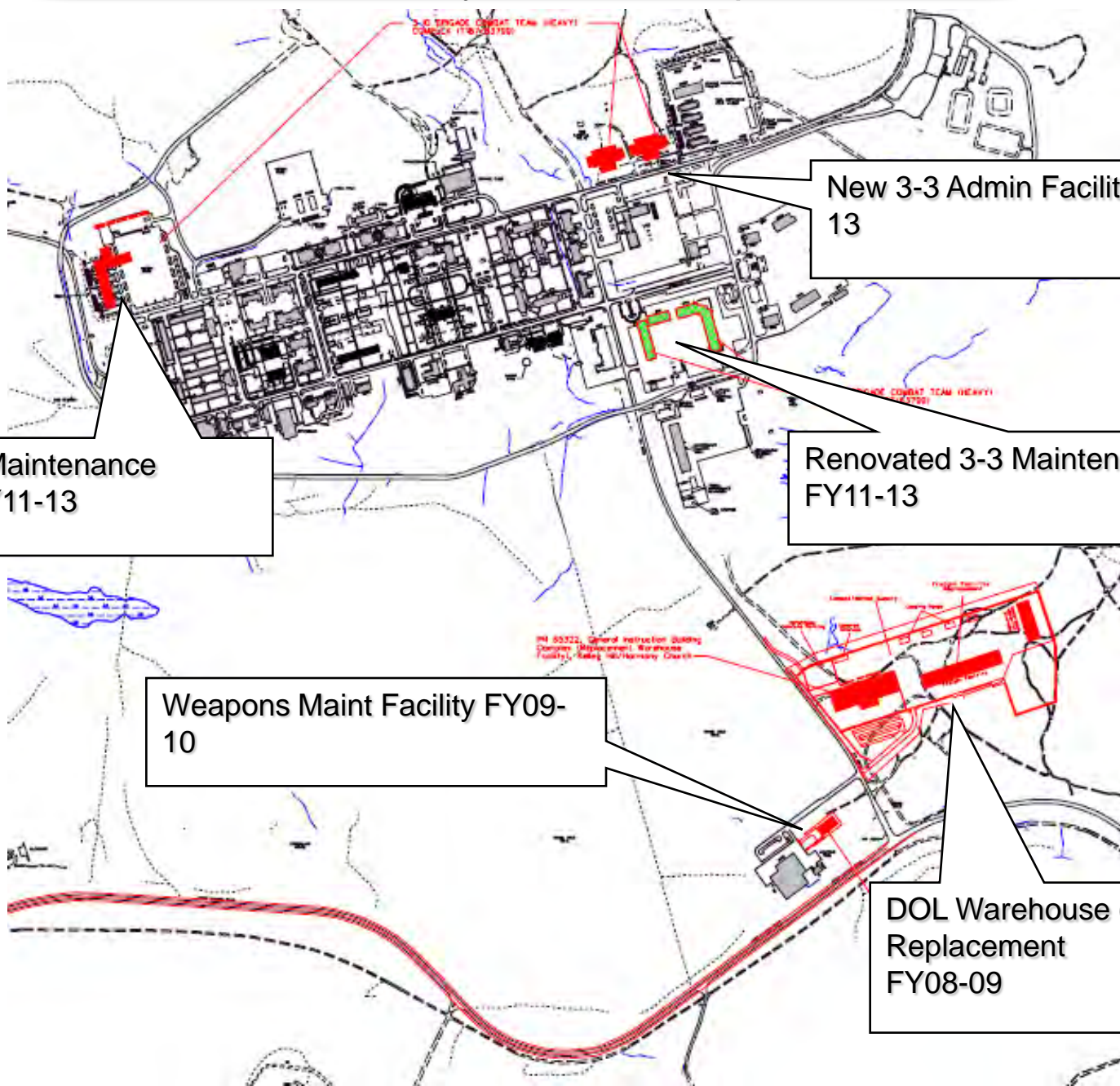


Construction – Sand Hill





Construction – Kelley Hill



New 3-3 Admin Facilities FY11-13

New 3-3 Maintenance Facility FY11-13

Renovated 3-3 Maintenance Facility FY11-13

Weapons Maint Facility FY09-10

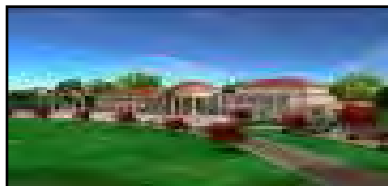
DOL Warehouse (ASL, CIF)
Replacement
FY08-09



Construction – Main Post



OCS/NCOA Warfighter Instructional Complex (WIC) FY 09-10



Armor Museum
FY10-12



Hospital Replacement
FY09-13



New PX



Maneuver Center
(MCOE HQ) FY 08-10

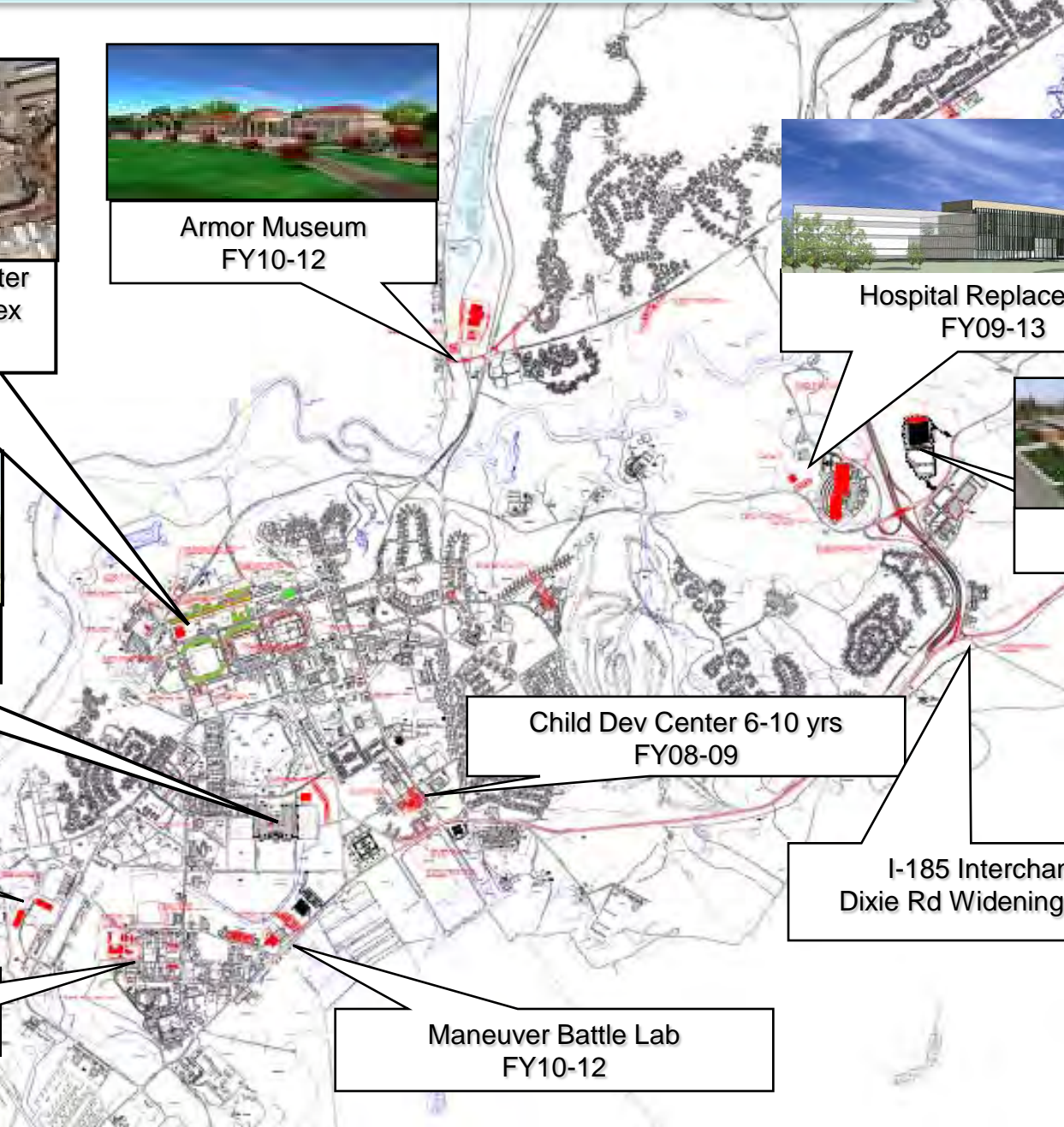
14th CSH BDE HQ
FY12-14

75 Rgr Bde Complex
FY08-10

Child Dev Center 6-10 yrs
FY08-09

I-185 Interchange &
Dixie Rd Widening FY08-09

Maneuver Battle Lab
FY10-12





CONSTRUCTION PHOTOS



FY 07 Harmony Church Perm. Pty Bks



FY 07 Harmony Church Perm. Pty Bks



FY 07 Harmony Church Perm. Pty Bks



FY 07 Harmony Church Perm. Pty Bks



FY 07 Harmony Church Perm. Pty DFAC



FY 07 Permanent Party Barracks, DFAC, COF- Harmony Church



FY 07 Permanent Party Barracks, DFAC, COF- Harmony Church



FY 07 Permanent Party Barracks, DFAC, COF-Harmony Church (Trainee Bks in background)



FY 07 Sand Hill Trainee Barracks- 2 Bn DFAC



FY 07 Sand Hill Trainee Bks - Bn HQ, then Co Bks bldgs



FY 07 Sand Hill Trainee Bks- DFAC entrance



FY 07 Sand Hill Trainee Bks- DFAC left, Bn Hq right, Co Bks bldgs behind each



FY 07 Trainee Barracks- Harmony Church



FY 07 Trainee Barracks- Harmony Church



FY 07 Trainee Barracks- Harmony Church



FY 07 Trainee Barracks- Harmony Church



FY 07 Trainee Barracks- Harmony Church



FY 07 Trainee Barracks- Harmony Church



Monthly Community Updates

- POC
 - Mr. Jay Brown, MCRC2
(john.w.brown@us.army.mil) / (706) 545-4729
 - <https://www.benning.army.mil/MCOE/content/CommunityUpdates/index.htm>
- Held monthly, 1st Tuesday of each month; Classroom 6, Building 4
- January 2009 briefing ONLY, Classroom 2A, Building 4





BACKUP

Growth – MCOE

Projected Daily Population

As of 24 October 2008

Fort Knox

2,981 MIL / 852 CIV / 7,016 Students /10,849 TOTAL

AFRC Columbus

0 MIL / 9 CIV / 9 TOTAL

Fort Jackson

➤ Drill Sergeant School
20 MIL / 0 CIV / 20 TOTAL

Fort Gillem (43rd ECS)

0 MIL / 85 CIV/ 85 TOTAL

Fort Benning Tenant Unit Growth

Garrison
0 MIL/570 CIV/3,044 CONT/3,614 TOTAL
MEDDAC/DENTAC
0 MIL/345 CIV/345 TOTAL
0 MIL/915 CIV/3,044 CONT/3,135 TOTAL

Other

➤ SOCOM (75th RGR Regt)
290 MIL / 0 CIV / 290TOTAL
Discretionary Moves (Vet Clinic,
Blood Donor Center, AAA)
41 MIL/28 CIV// 53 Total

331 MIL/28 CIV/359 Total

Fort Benning

	Permanent Party Military	DA Civilians/NAF	Military TDY Students/Trainees	Retirees	Dependents	Contractors	Total
Current	24,908	3,032	13,938	19,907	52,472	6,014	120,271
Growth	4,712	1,889	9,416	1,000*	18,919*	4,802*	39,737
Endstate	29,620	4,921	23,354	20,907	62,748	10,816	160,008

GDPR

497th Mvmt Control Team
21 MIL/0 CIV/21 Total
286th & 71st MP Det (CID)
42 MIL/0 CIV/42 Total
63 MIL/0 CIV/ 63 Total

Grow the Army

19th Med Det (Optometry)
6 MIL/0 CIV/6 Total
648th MEB (GA ARNG)
15 MIL/0 CIV/15 Total
IET Bn's
300 MIL/0 CIV/2400 Students/2700 TOTAL
321 MIL/0 CIV/2400 Students/2,721 Total

Inactivate / Disestablish

➤ 498th Med Co (Air Amb) 149 Mil/0 CIV/149 Total
➤ 608th Ordnance Co 183 MIL/0 CIV/183 Total
➤ 1/30th Inf Bn 779 MIL/0 CIV/779 Total
➤ 36th Engr Grp (Constr) 81 MIL/0 CIV/81 Total
➤ 361st Trailer Transfer Det 16 MIL/0 CIV/16 Total
➤ HHB, DIVARTY 6 MIL/0 CIV/6 Total
➤ Battery A, Target Acquisition 6 MIL/0 CIV/6 Total
➤ 104th Trans Co 177 MIL/ 0 CIV/177 Total

1,397 MIL/0 CIV/1,397 Total

AMF

➤ 3rd/1st CAV
379 MIL/0 CIV/ 379 Total
➤ 362nd Eng Co (MRBC)
185 MIL/0 CIV/185 Total
➤ 11th Engineer Battalion
422 MIL/0 CIV/ 422Total
➤ 24th Ammo Plt
159 MIL/0 CIV/ 159 Total
69th Trans Co (Mdm Trk)
172 MIL/ 0 CIV/ 172 Total

1,314 MIL / 0 CIV / 1,314 TOTAL

*Estimated Growth

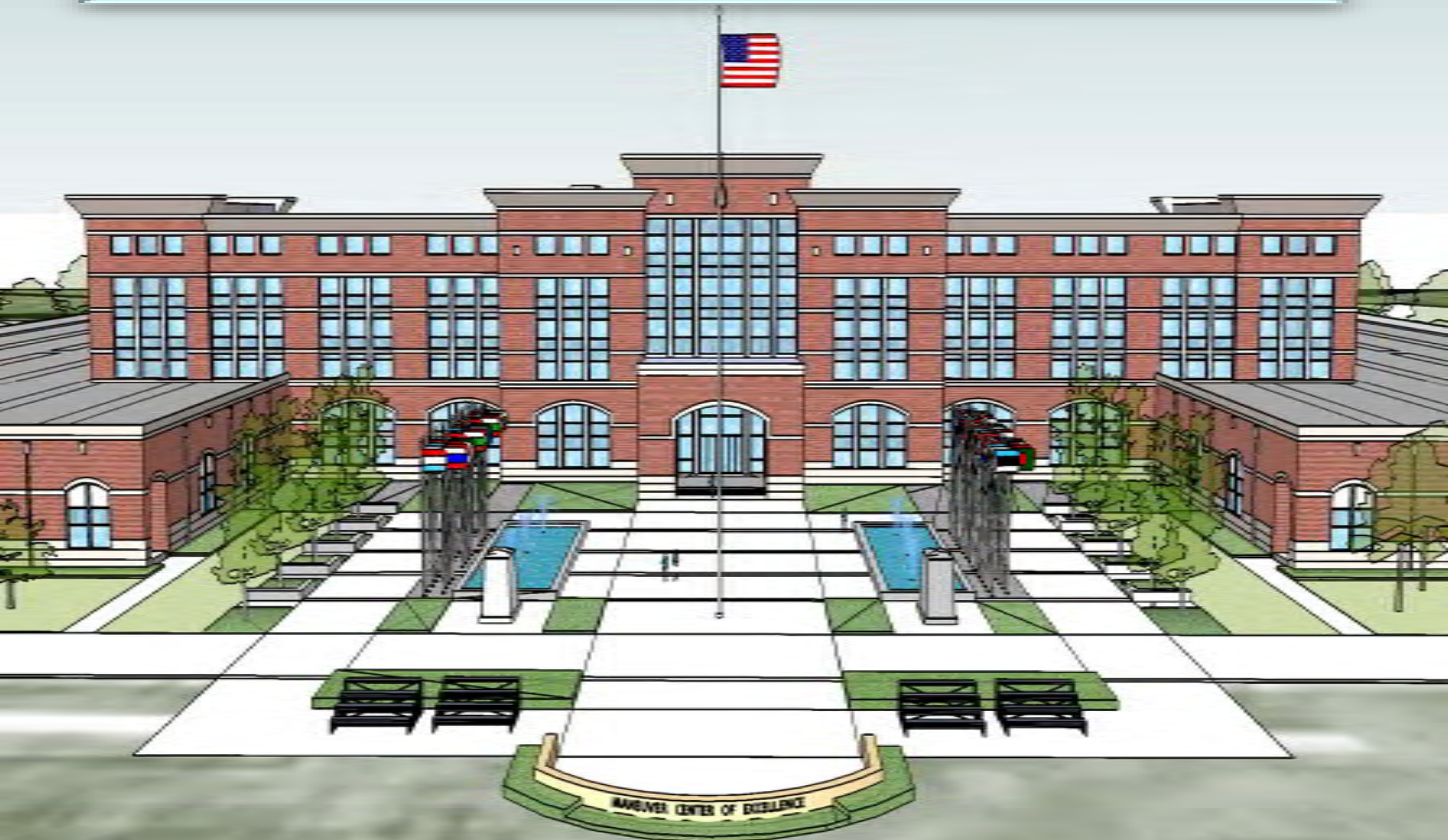
AMF = loss of 83 personnel

➤ Represents action already completed

Facilities – Building 4 Renovation (Existing)

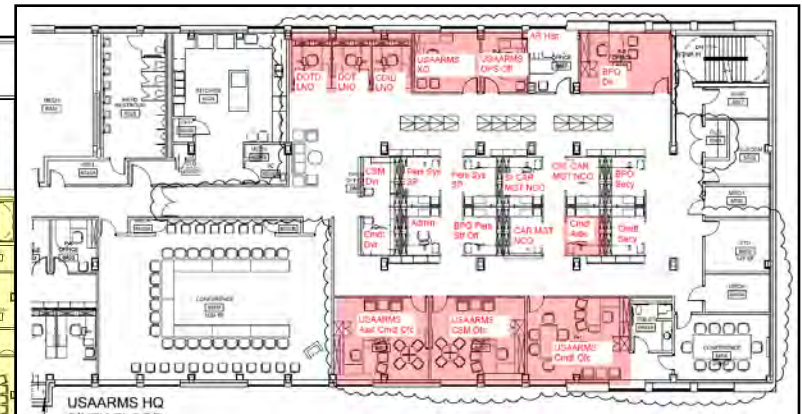


Building 4- Renovation (New Look)





A detailed architectural drawing of a large, multi-story brick building, likely a school or institutional structure. The building features a central entrance with a prominent archway and a tall, narrow window above it. The facade is composed of red brick with white mortar lines. Numerous windows are visible, including large multi-paned windows on the upper floors and smaller arched windows on the ground floor. The building has a symmetrical design with a central section and two long wings extending outwards. The drawing is done in a clean, illustrative style with black outlines and flat colors.





Armor School Support Facilities Area 1



3-81 AR Company
Operations Facility



MARDET
Headquarters



316 CAV Company
Operations Facilities



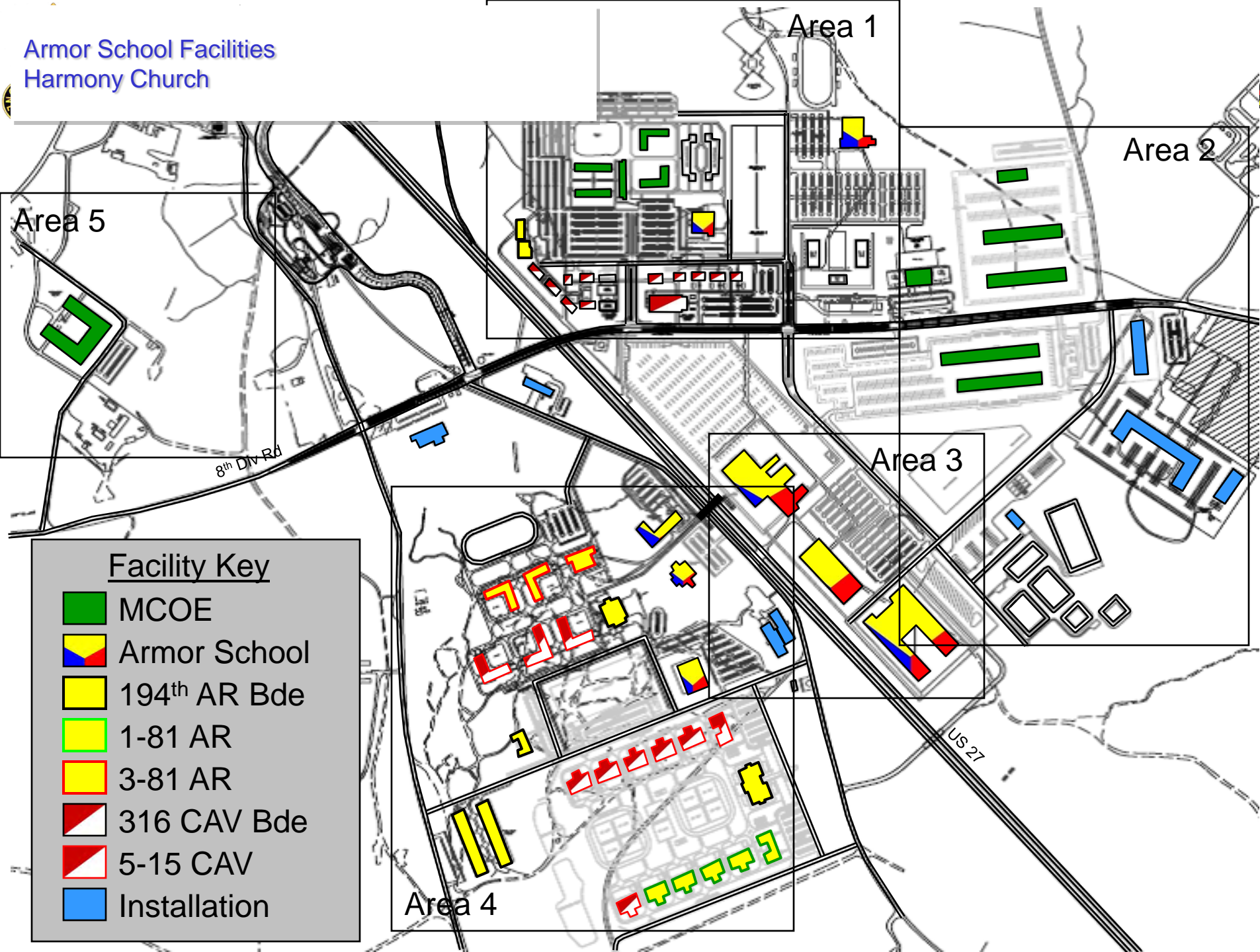
Readiness Modules



Arms Vault



Armor School Facilities
Harmony Church





Harmony Church Maintenance and Maintenance Instruction Facilities

