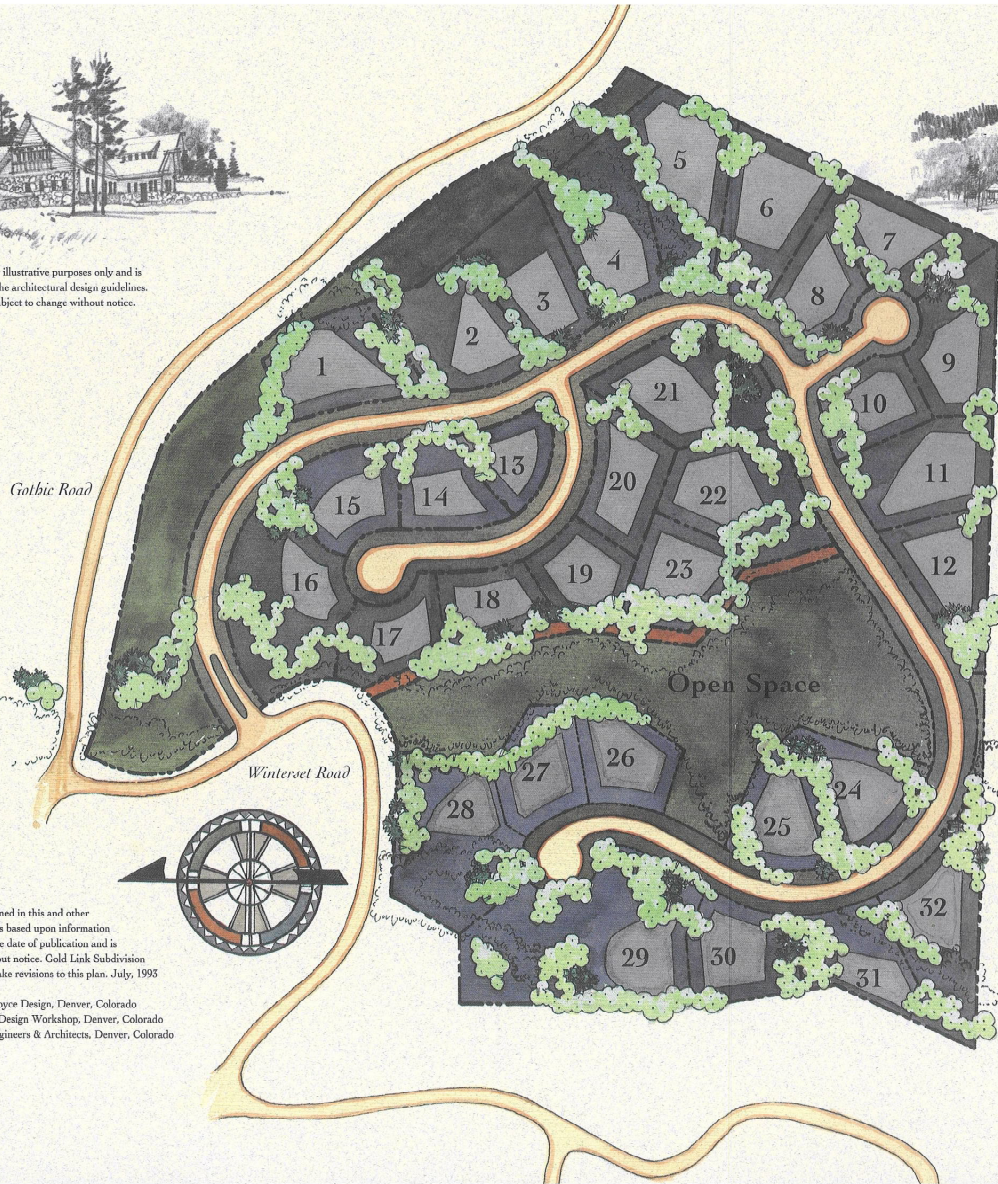
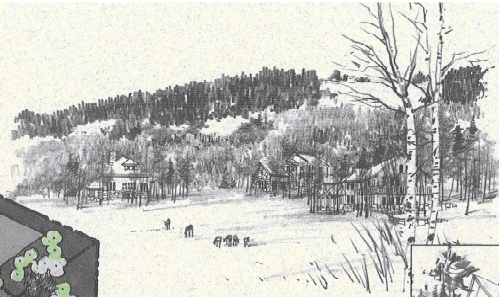




These drawings are for illustrative purposes only and is intended to represent the architectural design guidelines. These guidelines are subject to change without notice.



The information contained in this and other promotional materials is based upon information and plans existing at the date of publication and is subject to change without notice. Gold Link Subdivision reserves all rights to make revisions to this plan. July, 1995

Illustrations: Jeffrey Joyce Design, Denver, Colorado
 Planning Consultants: Design Workshop, Denver, Colorado
 Engineers: Merrick Engineers & Architects, Denver, Colorado

GOLD LINK

Tucked away. Right in the middle.

Gold Link is an exclusive development project of Crested Butte Mountain Resort. Every aspect of Gold Link has been carefully considered. Design guidelines have been developed to maximize the outstanding natural beauty of the area. Building envelopes have been identified for each lot to protect the natural terrain, views, privacy, vegetation and relationship between adjacent sites.

The design guidelines were prepared to protect and enhance the natural landscape and environment, maximize the long range views from each homesite, and minimize the visual impact of development from other homesites. The overall goal of the guidelines is to ensure high standards of structural design.

Even though Gold Link is tucked away in a protected mountain environment it is only minutes from all that Crested Butte has to offer. Out your door is the Gold Link ski lift. Just to the west is the future development site of the North Village, a planned community development by Crested Butte Mountain Resort. Minutes away is Mt. Crested Butte, the heart and heartbeat of the resort. Four miles away is "The Butte." The old town. Tradition. History. The place where it all started. All surrounded by an outdoor and cultural environment unsurpassed in its offerings and opportunities.

Our commitment is to develop the finest residential community in the Crested Butte area.