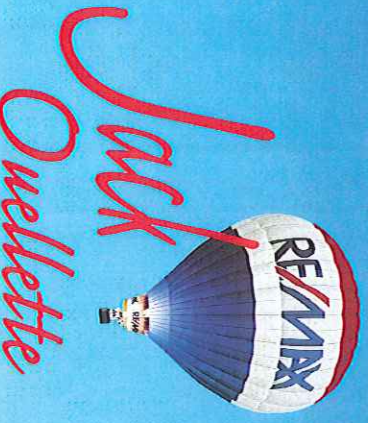
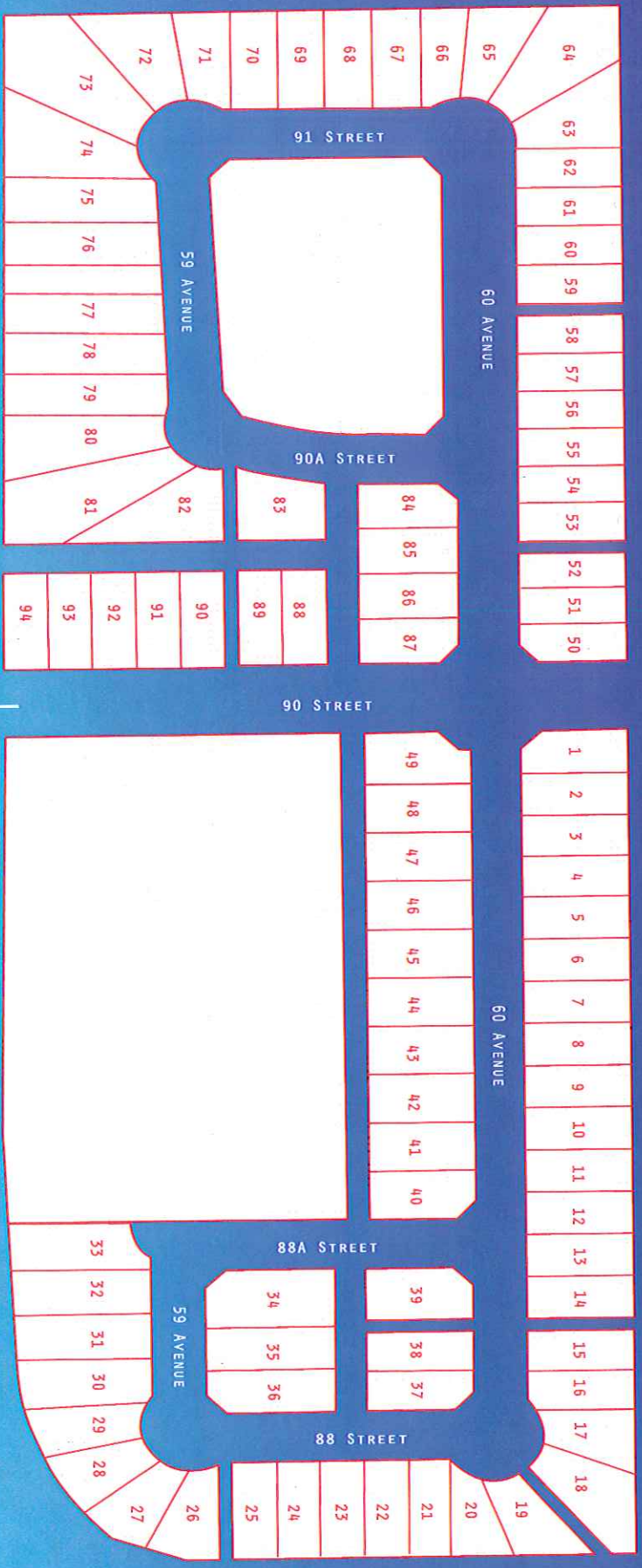
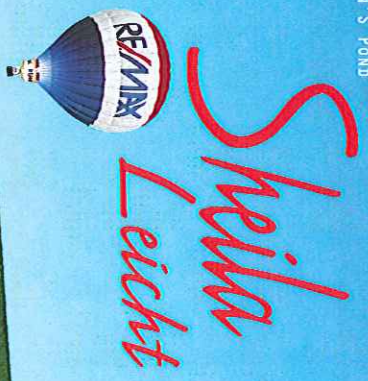


summer side south

START BUILDING YOUR FUTURE TODAY



Jack Ouellette
 (780) 538-0273
 www.JackOuellette.com



Sheila Leicht

remaxjo@telusplanet.net

litenhome@telus.net

summerside south
START BUILDING YOUR FUTURE TODAY

Grande Prairie has a new subdivision with a fresh vision. Be apart what of what everyone is talking about and enjoy a new way of life at Summerside South.

- Master planned community
- Architecturally controlled design scheme brings building your dream home to a new level of prestige
- Landscaping requirements to ensure quality green space and overall beauty
- Quiet, natural, tree-lined setting
- Oversized, spacious lots provide a feeling of freedom
- Direct future access to Resources Rd through Phase II
- Enjoy the illuminated walking path and other amenities at the serene setting of Hudson's Pond
- Proposed future school site adds to family orientated community Pod-Land Developments foresees

Come be apart of something special and feel secure knowing the investment of your new home will grow in value for years to come. Summerside South is a place to be proud of...

START BUILDING YOUR FUTURE TODAY!

summerside south
START BUILDING YOUR FUTURE TODAY

Hello and thank you for your interest in Summerside South. Summerside South started out simply as a desire to create something better. In 2004 my father and I were actively involved building The Podollan Inn on 99th Ave., our family's fourth hotel, when we realized we could also offer Grande Prairie something more. In our opinion the housing market, although healthy and robust, seemed to lack a touch of creativity and in particular areas a certain level of craftsmanship. We also noticed that residential lots were rarely available to the individual buyer, and almost 90% of lot sales went straight to the contractors. We were inspired to offer a new community with a new vision. We wanted to offer a fresh choice and a new standard in housing for the people of Grande Prairie.

We found and purchased the right piece of land four years ago, and we took the time during the design process to make sure everything was perfect. For the benefit of our customers, we wanted to offer a community where home plans, building materials, and landscaping were all monitored. Through years of experience we know this is the safest way to ensure quality, to maintain the values of your homes over the long term, and to help instill a feeling of "community" and pride of ownership. To do this we have drafted an architectural design scheme, which all customers will be obliged to follow. We will personally work together with each and every customer during the process, private individuals and professional contractors alike, ensuring that another beautiful home will be the result of our cooperation.

Although we want to work closely with the reputable contractors of the area we also want to be sure that the individual customer is not lost. We realize it is important to allow people the opportunity to purchase their own special piece of land, and then fulfill their wishes of creating their dream home. By allowing individuals the chance to be directly involved with their choice of lot and the design of their own home, we as developers believe this helps create another vital connection to the community. We believe Summerside South is the type of community that its residents will proudly call "home".

My father, David Podollan, has been involved in all aspects of the construction industry for over the past 35 years. He started his career in the Okanagan Valley and his reputation grew quickly and was soon recognized as Vernon's #1 home builder and developer. He built million dollar homes in the Lower Mainland, and many condominiums in Vernon as well as Fort McMurray. He has focused most recently on his hotel chain with his second Grande Prairie property scheduled to be completed in the Fall of 2009. With another 60 acres left to develop in Phase II of Summerside South and a genuine interest in the success of Grande Prairie as a whole, rest assured that you are in solid company with Pod-Land Developments.

Sincerely,
Jason Podollan
Pod-Land Developments

summerside south

START BUILDING YOUR FUTURE TODAY

LOT	WIDTH	DEPTH	SIZE SQ FT	PRICE		LOT	WIDTH	DEPTH	SIZE SQ FT	PRICE	
1	49'3"	107'	5075.2	\$104,900	SOLD	48	55'	107'	5871.3	\$119,800	
2	48'	107'	5169.3	\$104,900	SOLD	49	58'6"	107'	6051.8	\$129,900	SOLD
3	46'	107'	4953.8	\$87,900		50	44'	107'	4574.9	\$92,900	SOLD
4	46'	107'	4953.8	\$87,900		51	40'	107'	4307.8	\$84,900	
5	48'	107'	5172.8	\$89,900		52	40'	107'	4307.8	\$84,900	
6	48'	107'	5172.8	\$89,900		53	44'	107'	4735.6	\$86,500	
7	48'	107'	5172.8	\$89,900		54	42'8"	107'	4593.3	\$89,900	
8	48'	107'	5172.8	\$89,900		55	42'8"	107'	4593.3	\$89,900	
9	48'	107'	5172.8	\$89,900		56	42'8"	107'	4593.3	\$89,900	
10	48'	107'	5172.8	\$89,900		57	42'8"	107'	4593.3	\$89,900	
11	48'	107'	5172.8	\$89,900		58	42'8"	107'	4593.3	\$89,900	
12	48'	107'	5172.8	\$89,900		59	44'	107'	4735.9	\$89,900	
13	48'	107'	5172.8	\$89,900		60	44'	107'	4738.6	\$89,900	
14	48'	107'	5172.8	\$89,900		61	44'	107'	4738.6	\$89,900	
15	46'	107'	4953.8	\$87,900		62	44'	107'	4738.6	\$89,900	
16	44'	107'	4687.6	\$86,500		63	45'1"	132'	7134.3	\$129,500	SOLD
17	48'10"	100'	5258.5	\$97,900		64	44'11"	132'	10099.9	\$155,500	SOLD
18	44'8"	129'	7526.2	\$114,700		65	43'1"	125'	6028.4	\$115,700	SOLD
19	46'8"	118'	5379.7	\$99,900		66	40'11"	113'	4764.8	\$115,700	SOLD
20	41'1"	110'	4438.3	\$93,000		67	48'	113'	5419.7	\$96,750	
21	44'6"	110'	4894.9	\$96,750		68	48'	113'	5410.1	\$96,750	
22	44'6"	110'	4894.9	\$96,750		69	48'	112'	5400.5	\$96,750	
23	44'6"	110'	4894.9	\$96,750		70	48'	112'	5390.8	\$96,750	
24	44'6"	110'	4894.9	\$96,750		71	46'11"	112'	5393.2	\$95,500	
25	44'6"	110'	4894.9	\$96,750		72	50'	141'	7547.9	\$112,500	
26	43'6"	108'	5416.2	\$104,900		73	55'5"	151'	12932.1	\$139,900	
27	43'4"	98'	5272.9	\$114,500		74	45'8"	151'	9563.5	\$125,750	
28	43'	102'	5108.8	\$121,300		75	49'2"	155'	7698.2	\$119,500	
29	43'11"	123'	5258.2	\$129,800		76	49'	158'	7706	\$119,500	
30	49'4"	136'	6955.1	\$135,900		77	46'	162'	7412.4	\$114,000	
31	51'2"	138'	7020.4	\$137,900		78	46'	165'	7525.8	\$115,500	
32	51'	140'	7117.6	\$138,900		79	46'	165'	7617.5	\$116,600	
33	53'4"	140'	7023.8	\$139,900		80	42'6"	174'	9236.1	\$125,250	
34	65'5"	131'	8381.5	\$125,500		81	43'1"	174'	11916.3	\$134,250	
35	48'	131'	6289.7	\$103,800		82	57'1"	163'	8107.7	\$115,900	
36	48'3"	131'	6151.5	\$101,900		83	93'5"	86'	6697.5	\$119,500	
37	45'2"	108'	4656.8	\$89,900		84	50'9"	107'	5269.3	\$105,550	
38	44'	108'	4741.7	\$91,900		85	51'7"	107'	5555.5	\$106,900	
39	59'1"	108'	6166.2	\$119,750		86	51'7"	107'	5555.5	\$106,900	
40	55'	107'	5675.6	\$127,200		87	51'7"	107'	5361.8	\$119,700	SOLD
41	55'	107'	5871.3	\$119,800		88	45'6"	110'	4996.4	\$91,750	
42	55'	107'	5871.3	\$119,800		89	45'6"	110'	4998.5	\$91,750	
43	55'	107'	5871.3	\$119,800		90	44'7"	110'	4898.3	\$89,900	
44	55'	107'	5871.3	\$119,800		91	44'7"	110'	4897.5	\$89,900	
45	55'	107'	5871.3	\$119,800		92	44'7"	110'	4896.6	\$89,900	
46	55'	107'	5871.3	\$119,800		93	44'7"	110'	4898.3	\$89,900	
47	55'	107'	5871.3	\$119,800		94	45'8"	110'	5007.1	\$92,500	

*Lot widths are measured at 25' from the front curbside lot line