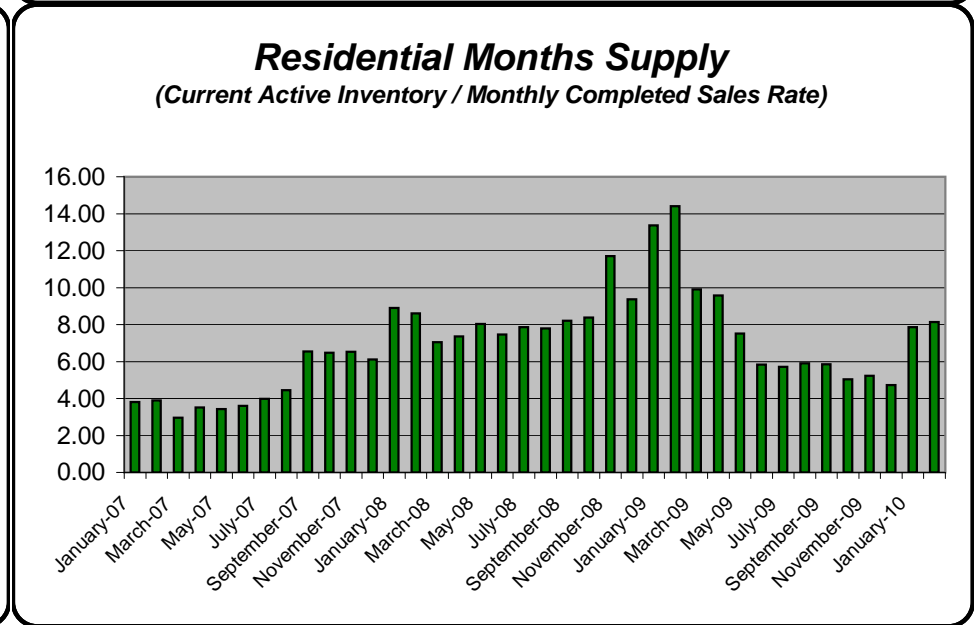
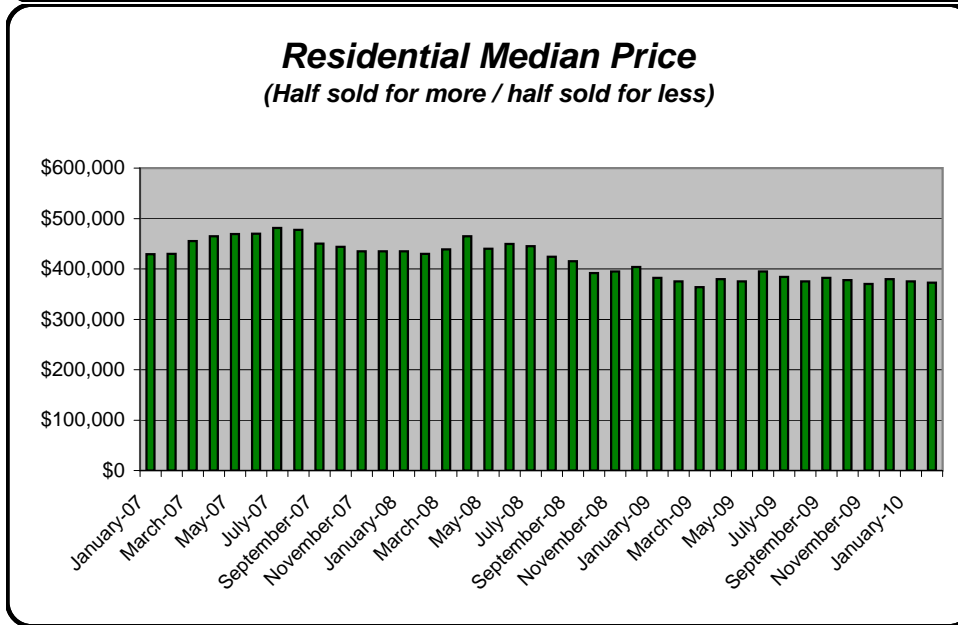
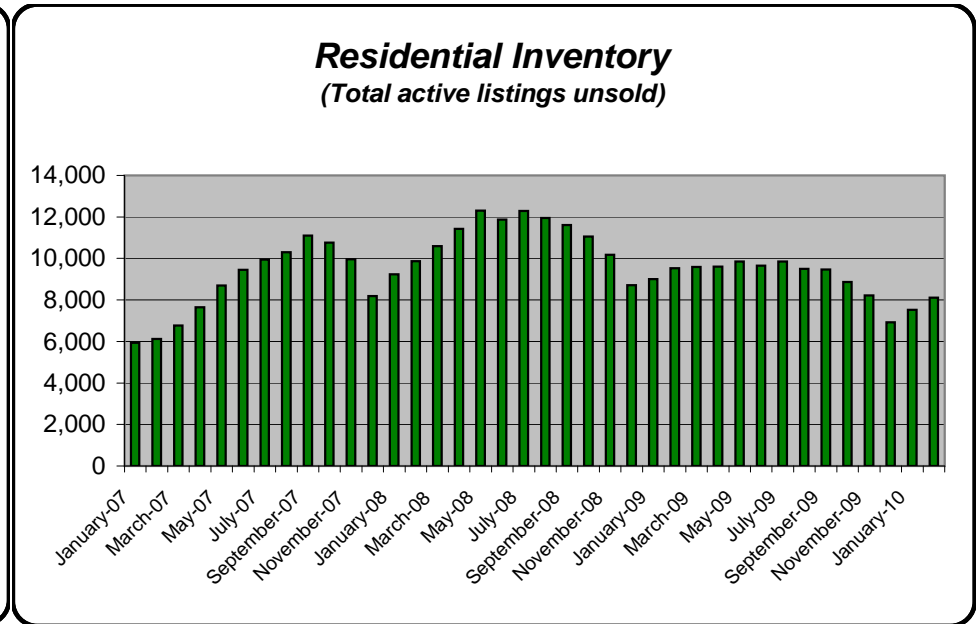
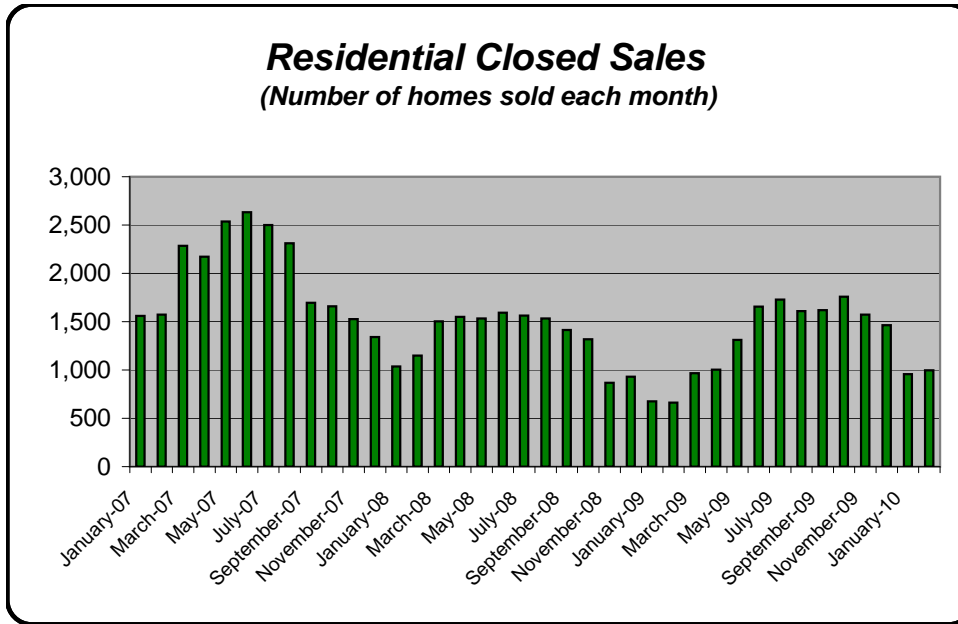


# King County Residential Sales Statistics:

(source NWMLS monthly statistical reports; charts and interpretation are by Chuck Reiling and are not reviewed or verified by NWMLS )

# January 2007 - February 2010

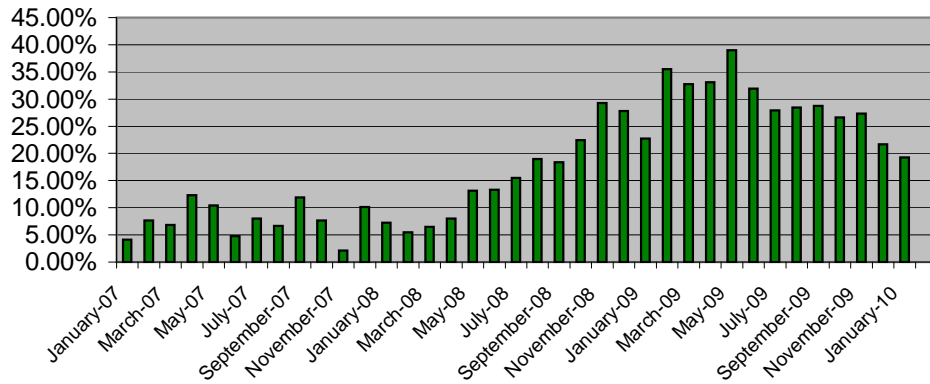


# King County Residential Sales Statistics:

(source NWMLS monthly statistical reports; charts and interpretation are by Chuck Reiling and are not reviewed or verified by NWMLS )

January 2007 - February 2010

**Fall-Out Ratio - Pending vs Closed**  
**Index of Pending backlog vs Closed Sales**  
 ( 2-month running average )



**Days On Market**  
 (Average number of days to sell a home)

