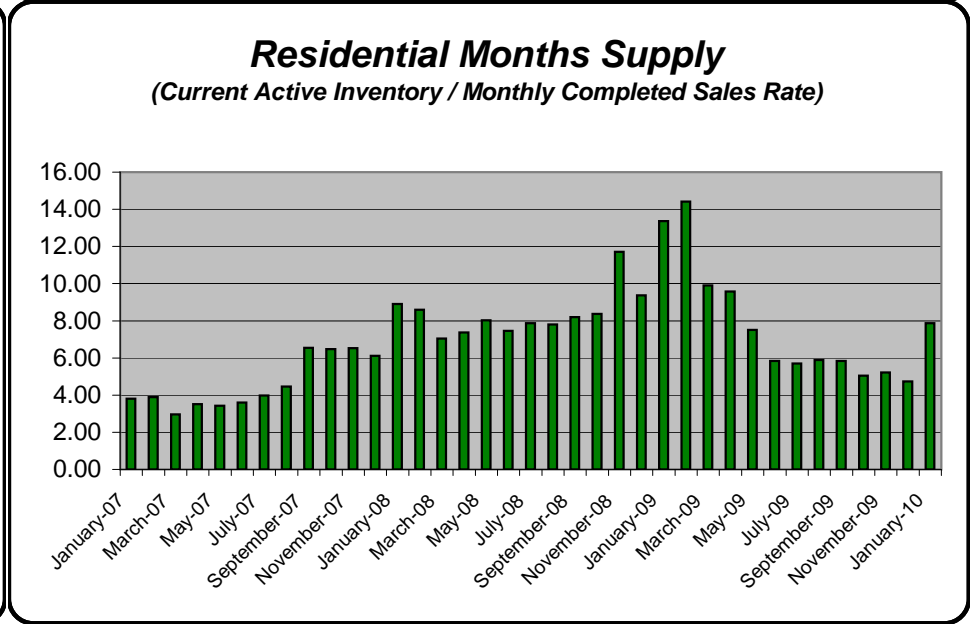
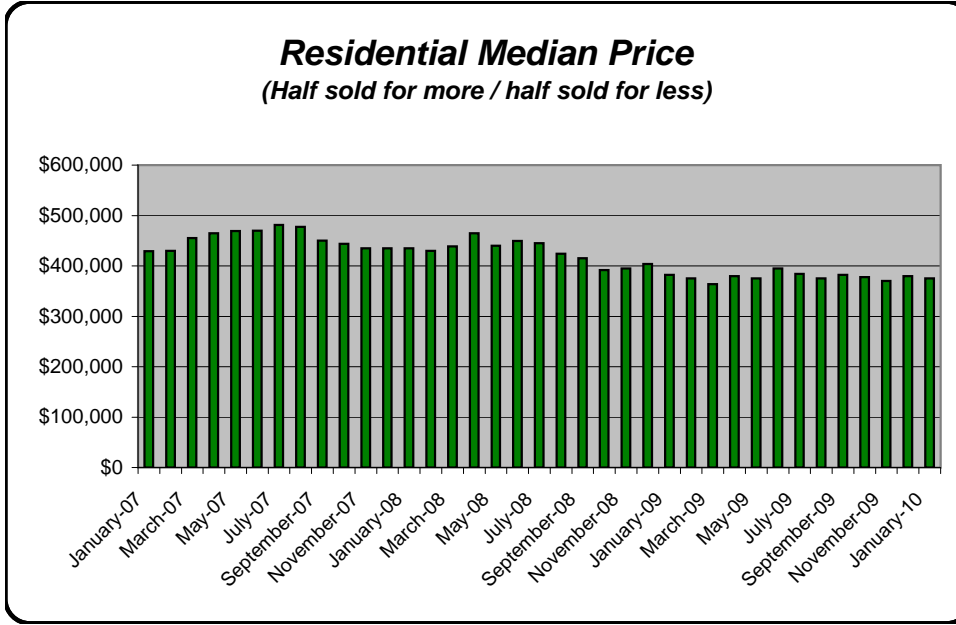
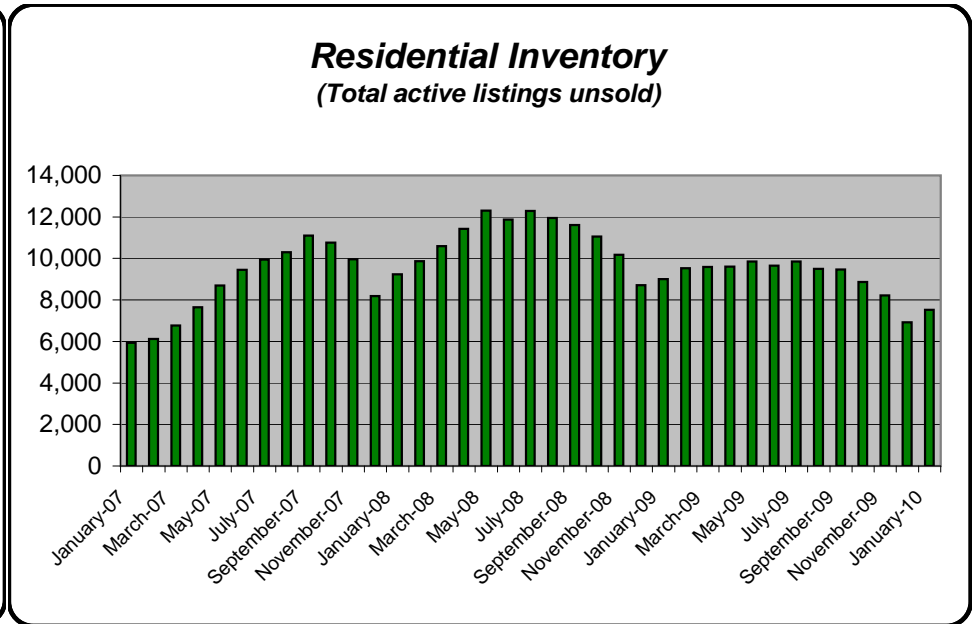
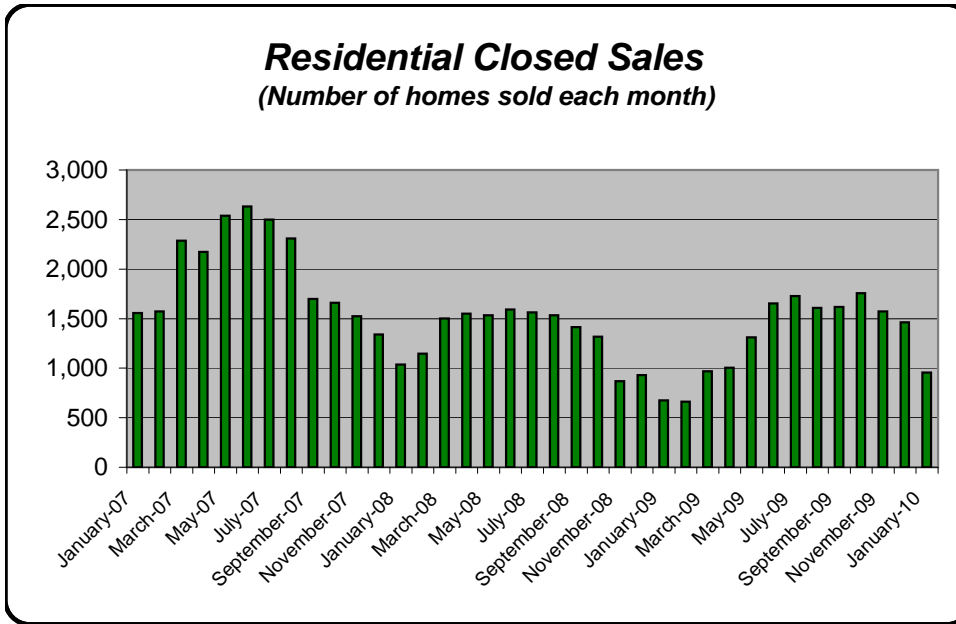


King County Residential Sales Statistics:

(source NWMLS monthly statistical reports; charts and interpretation are by Chuck Reiling and are not reviewed or verified by NWMLS)

January 2007 - January 2010

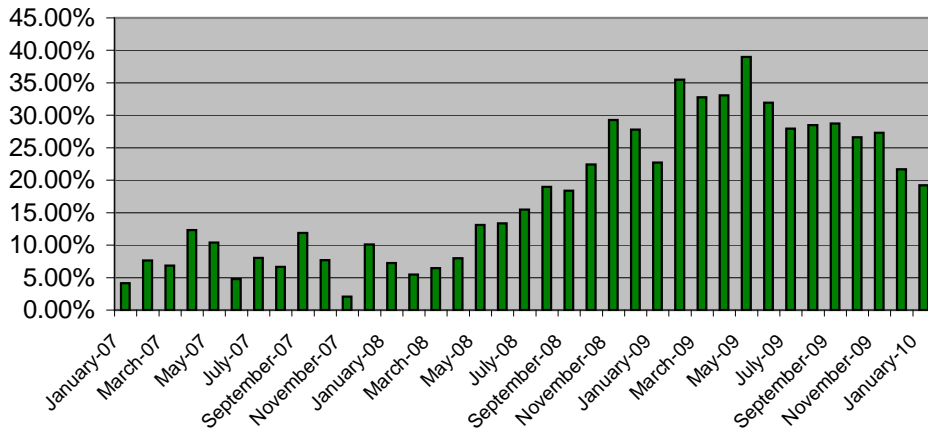


King County Residential Sales Statistics:

(source NWMLS monthly statistical reports; charts and interpretation are by Chuck Reiling and are not reviewed or verified by NWMLS)

January 2007 - January 2010

Fall-Out Ratio - Pending vs Closed
Index of Pending backlog vs Closed Sales
 (2-month running average)



Days On Market
 (Average number of days to sell a home)

