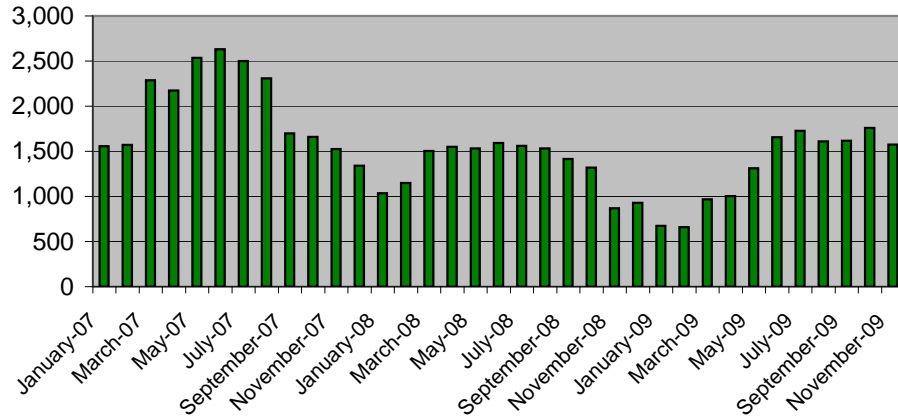


# King County Residential Sales Statistics:

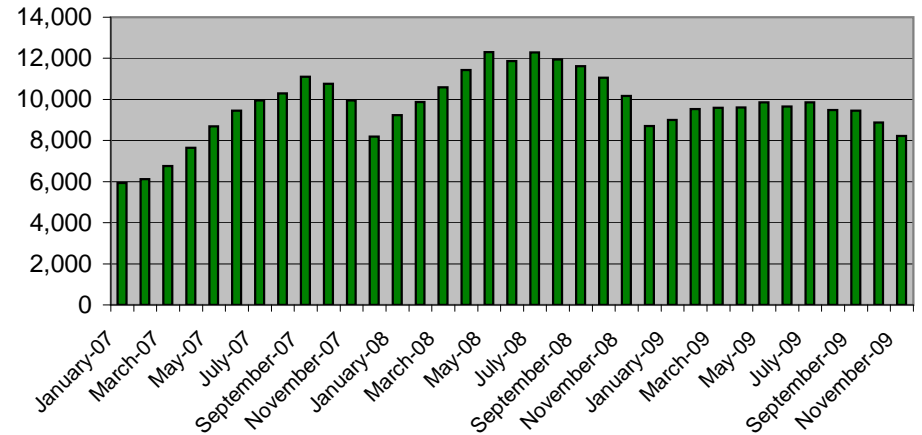
January 2007 - November 2009

(source NWMLS monthly statistical reports; charts and interpretation are by Chuck Reiling and are not reviewed or verified by NWMLS )

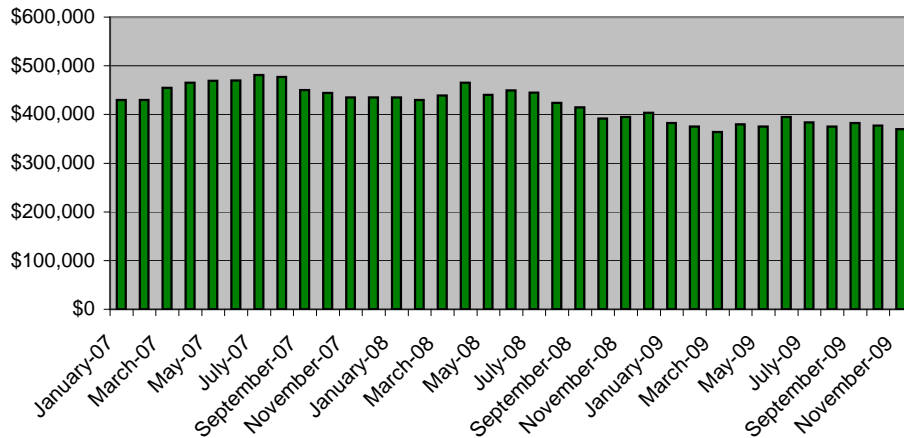
**Residential Closed Sales**  
(Number of homes sold each month)



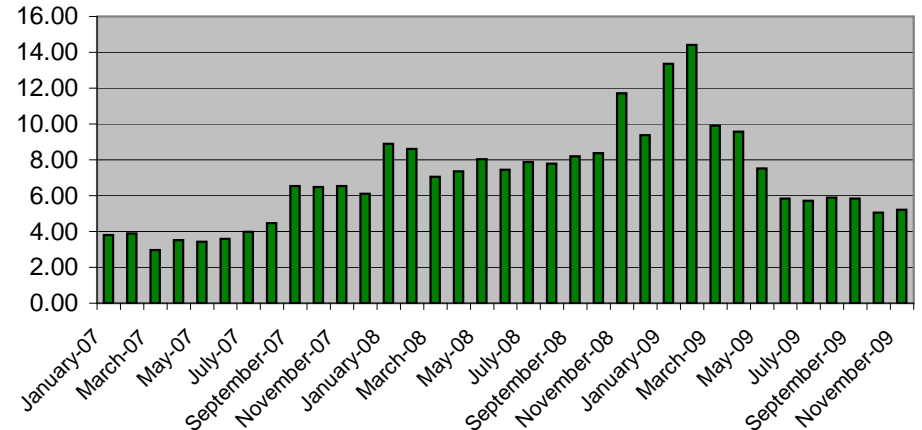
**Residential Inventory**  
(Total active listings unsold)



**Residential Median Price**  
(Half sold for more / half sold for less)



**Residential Months Supply**  
(Current Active Inventory / Monthly Completed Sales Rate)

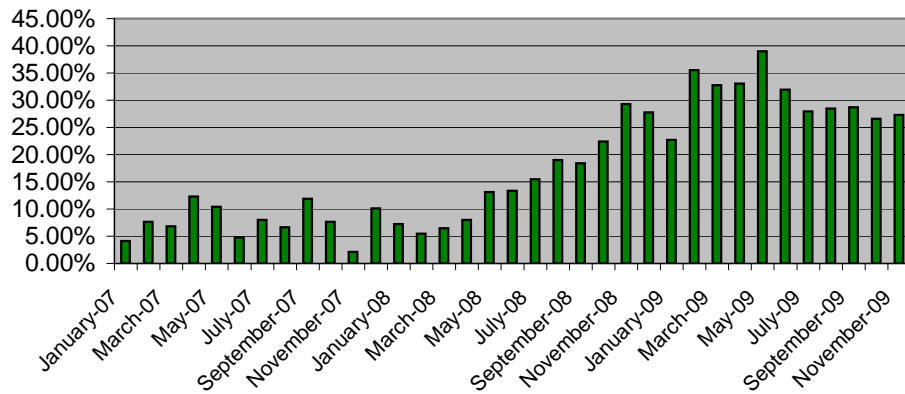


# King County Residential Sales Statistics:

January 2007 - November 2009

(source NWMLS monthly statistical reports; charts and interpretation are by Chuck Reiling and are not reviewed or verified by NWMLS )

**Fall-Out Ratio - Pending vs Closed**  
**Index of Pending backlog vs Closed Sales**  
 ( 2-month running average )



**Days On Market**  
 (Average number of days to sell a home)

