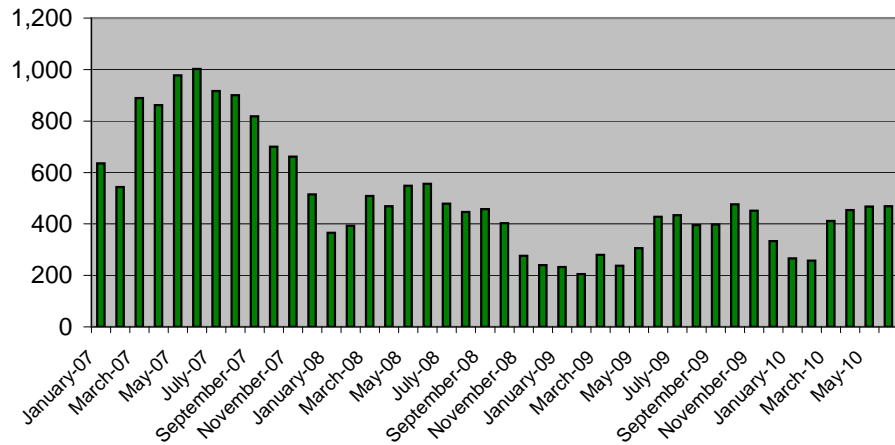


# King County Condominium Sales Statistics:

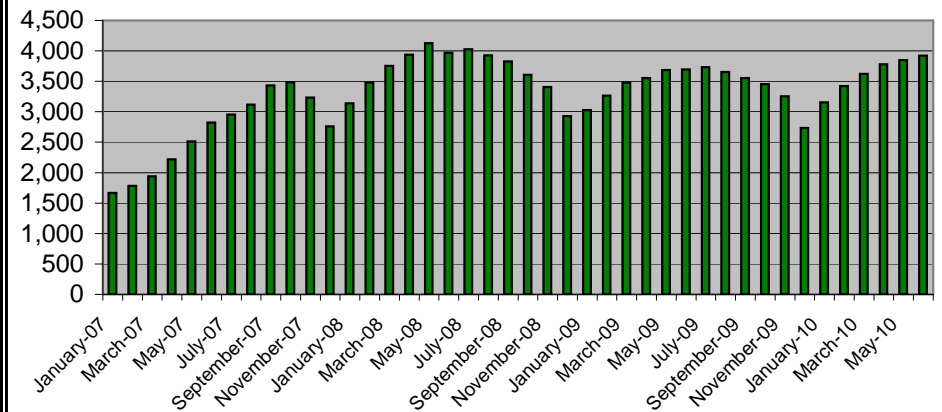
(source NWMLS monthly statistical reports; charts and interpretation are by Chuck Reiling and are not reviewed or verified by NWMLS )

January 2007 - June 2010

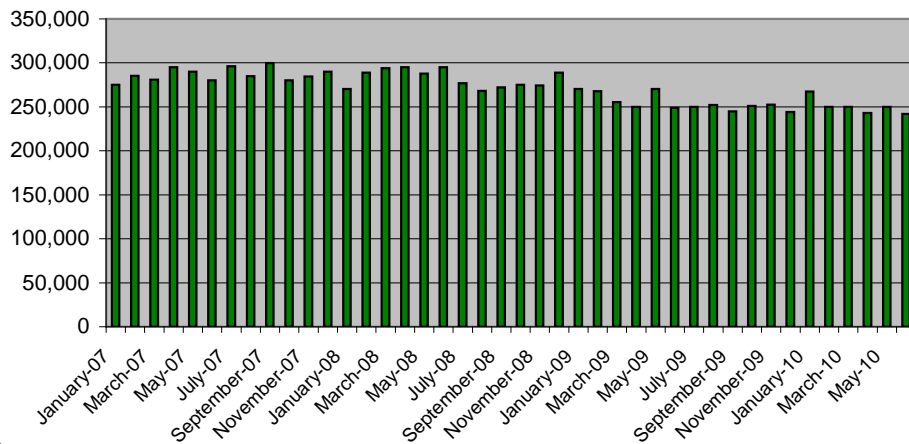
## Condominium Closed Sales



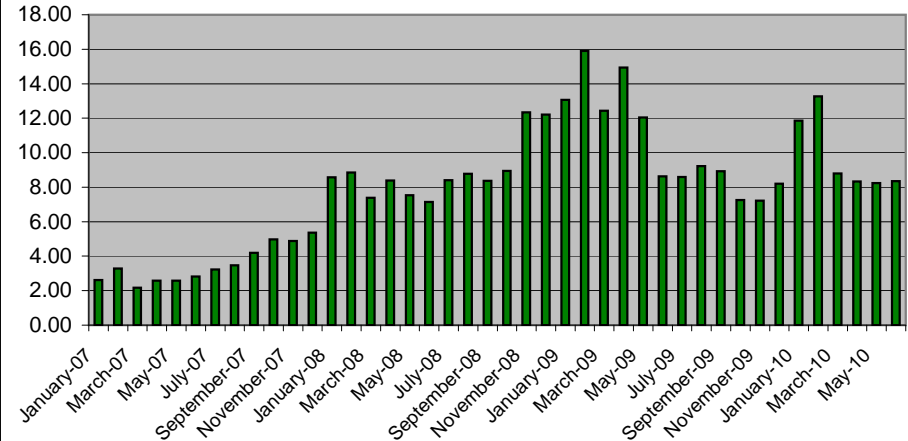
## Condominium Inventory



## Median Condominium Prices (Half sold for more / half sold for less)



## Condominium Months Supply (Current Active Inventory / Monthly Completed Sales Rate)

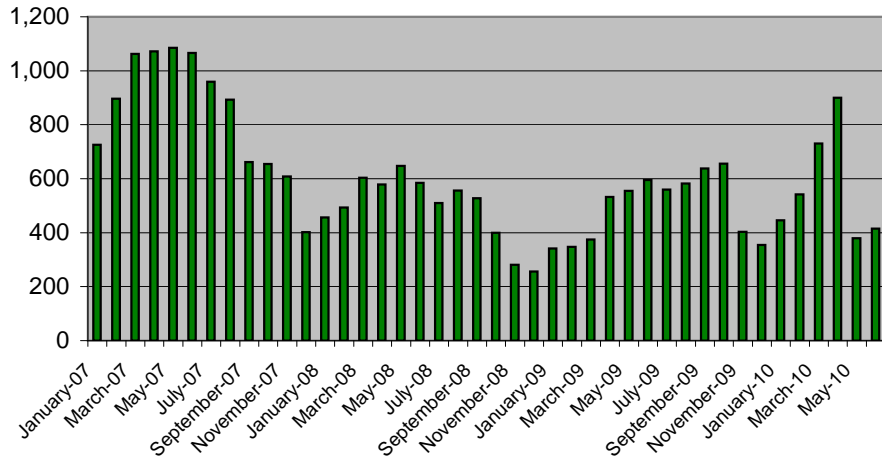


# King County Condominium Sales Statistics:

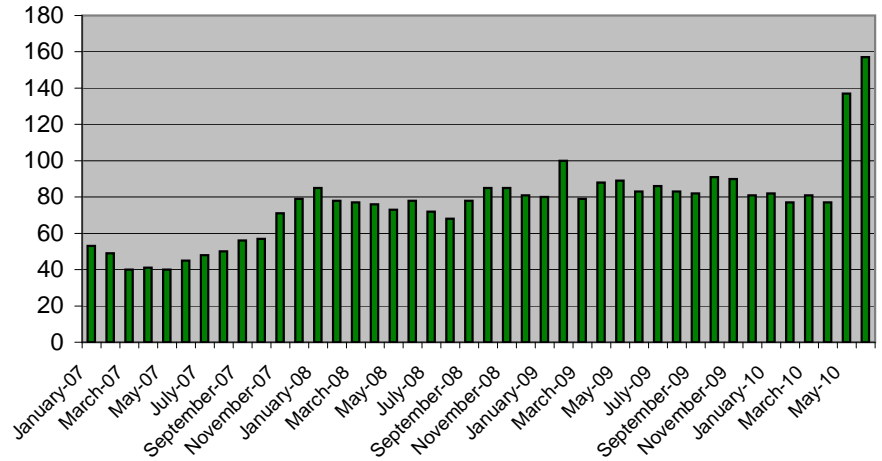
(source NWMLS monthly statistical reports; charts and interpretation are by Chuck Reiling and are not reviewed or verified by NWMLS )

January 2007 - June 2010

## Condominium Pending Sales



## Days On Market



## Condos as % of Total Active Inventory

