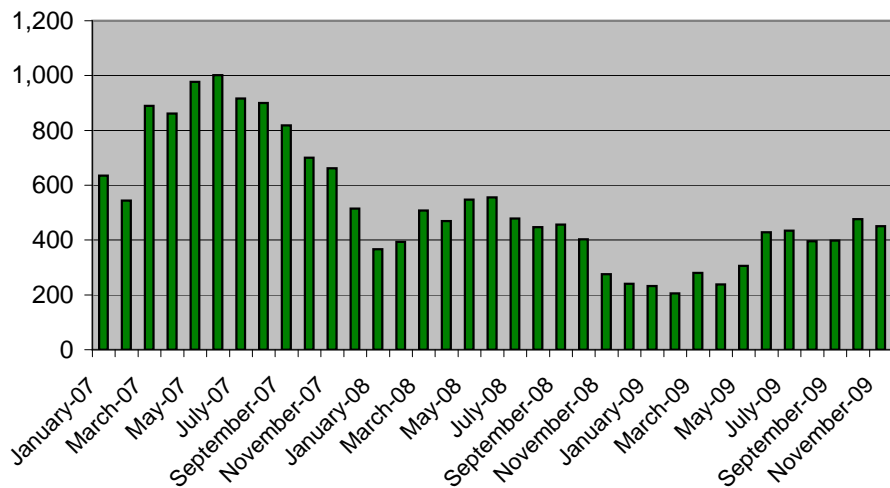


King County Condominium Sales Statistics:

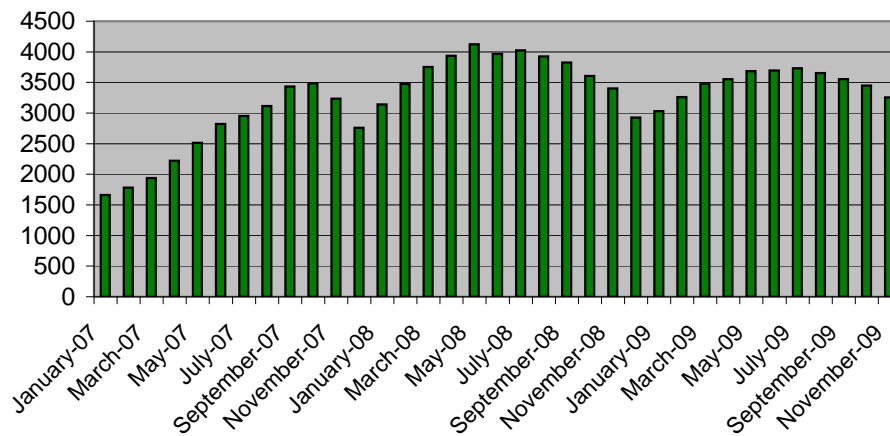
(source NWMLS monthly statistical reports; charts and interpretation are by Chuck Reiling and are not reviewed or verified by NWMLS)

January 2006 - November 2009

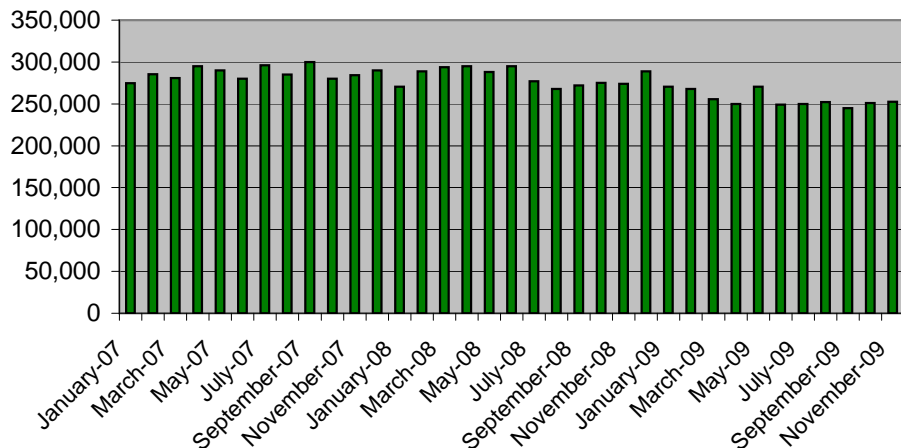
Condominium Closed Sales



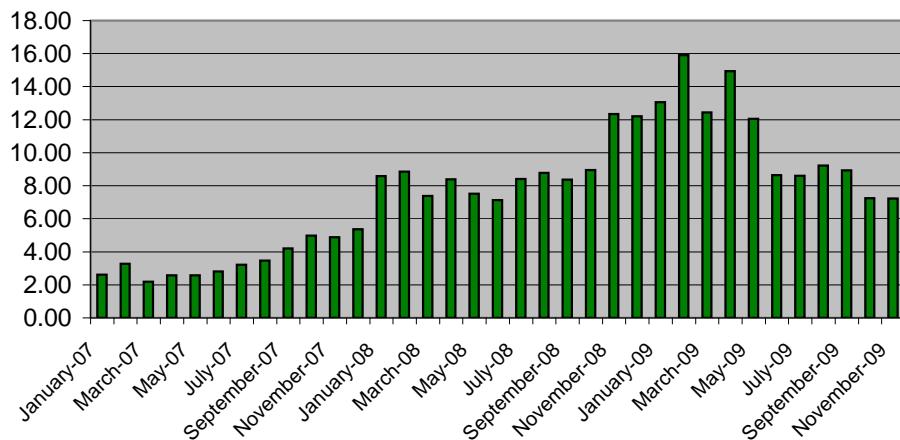
Condominium Inventory



Median Condominium Prices (Half sold for more / half sold for less)



Condominium Months Supply (Current Active Inventory / Monthly Completed Sales Rate)

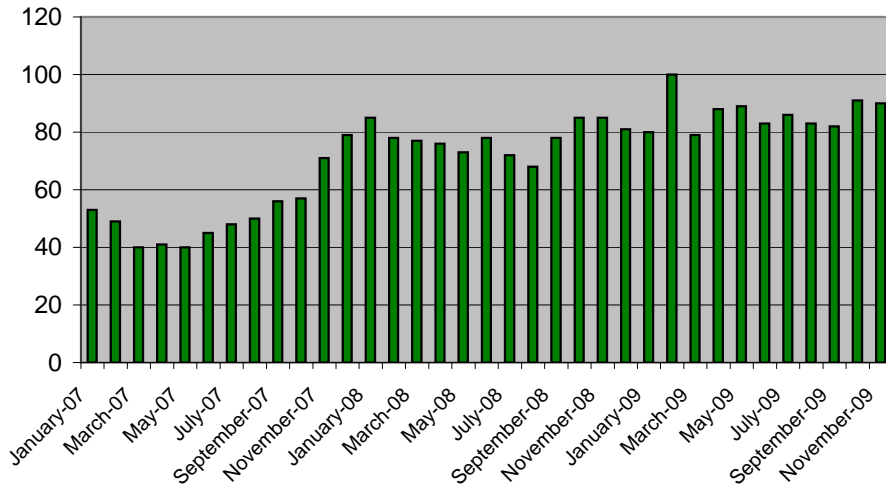


King County Condominium Sales Statistics:

(source NWMLS monthly statistical reports; charts and interpretation are by Chuck Reiling and are not reviewed or verified by NWMLS)

January 2006 - November 2009

Days On Market



Condos as % of Total Active Inventory

