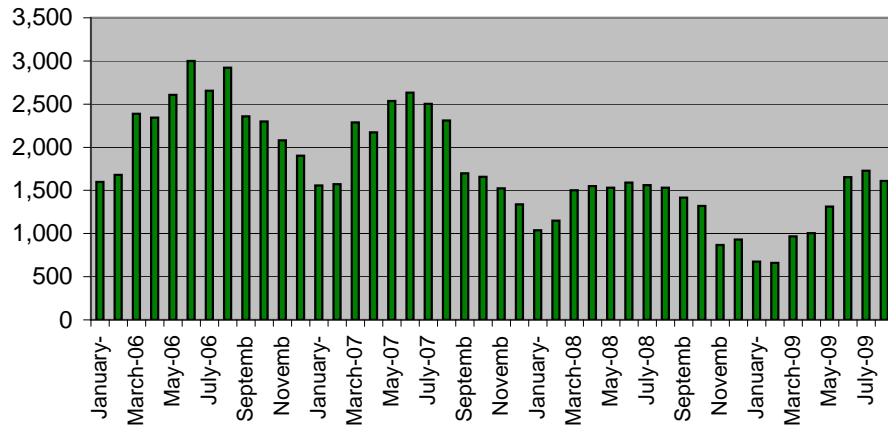


King County Residential Sales Statistics:

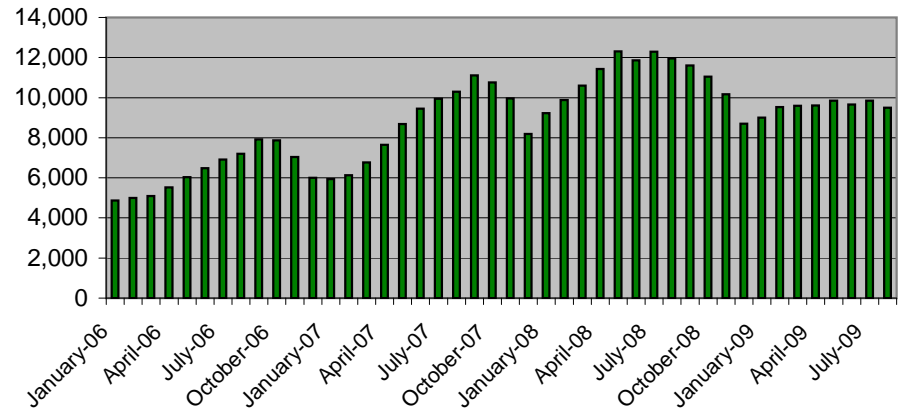
(source NWMLS monthly statistical reports; charts and interpretation are by Chuck Reiling and are not reviewed or verified by NWMLS)

January 2006 - August 2009

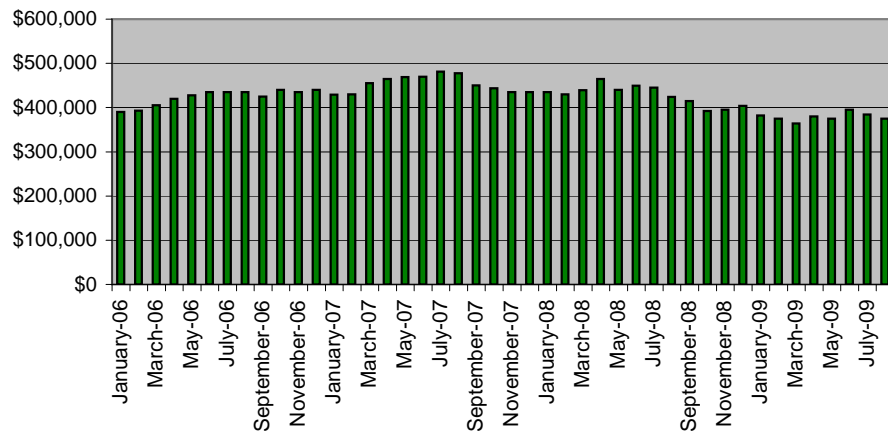
Residential Closed Sales
(Number of homes sold each month)



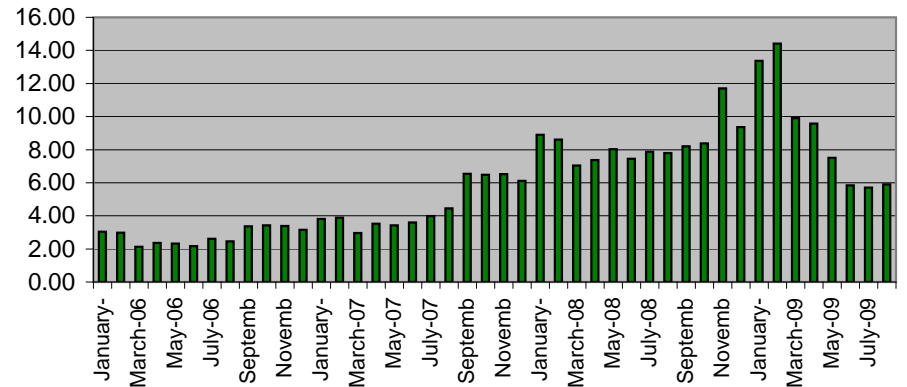
Residential Inventory
(Total active listings unsold)



Residential Median Price
(Half sold for more / half sold for less)



Months Supply
(Current Active Inventory / Monthly Completed Sales Rate)



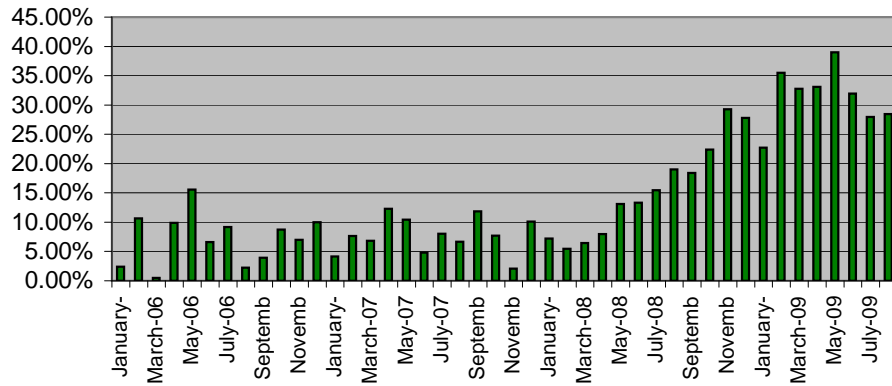
King County Residential Sales Statistics:

(source NWMLS monthly statistical reports; charts and interpretation are by Chuck Reiling and are not reviewed or verified by NWMLS)

January 2006 - August 2009

Page 2 of 2

Fall-Out Ratio - Pending vs Closed
Index of Pending backlog vs Closed Sales
 (2-month running average)



Days On Market
 (Average number of days to sell a home)

