

King County Residential Sales Statistics:

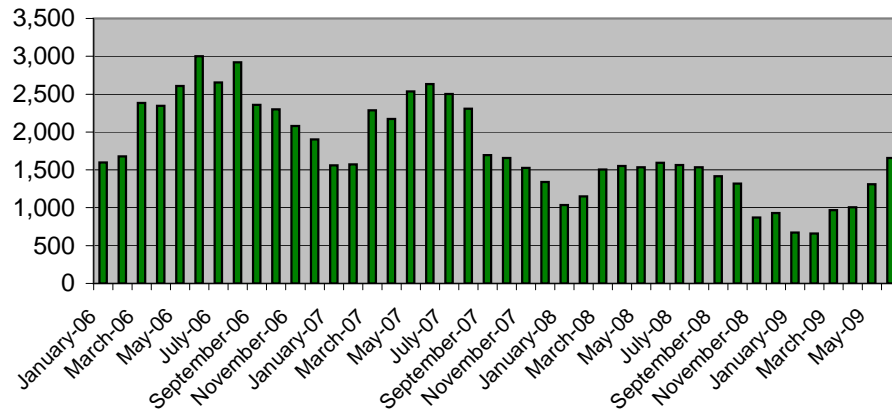
(source NWMLS monthly statistical reports; charts and interpretation are by Chuck Reiling and are not reviewed or verified by NWMLS)

January 2006 - June 2009

Page 1 of 2

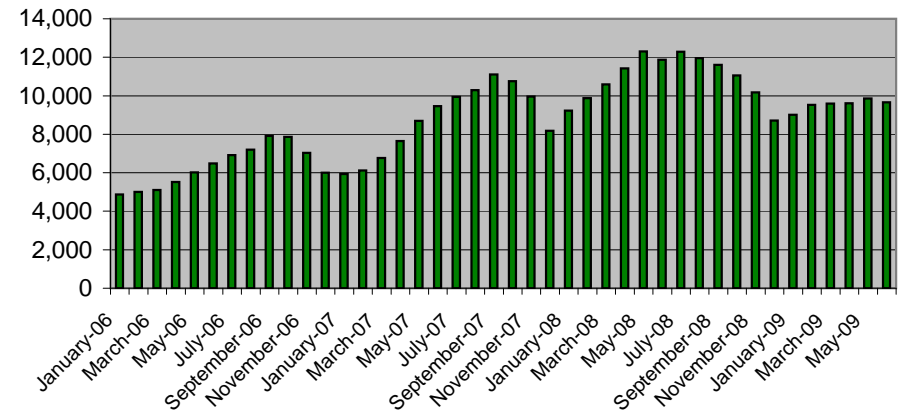
Residential Closed Sales

(Number of homes sold each month)



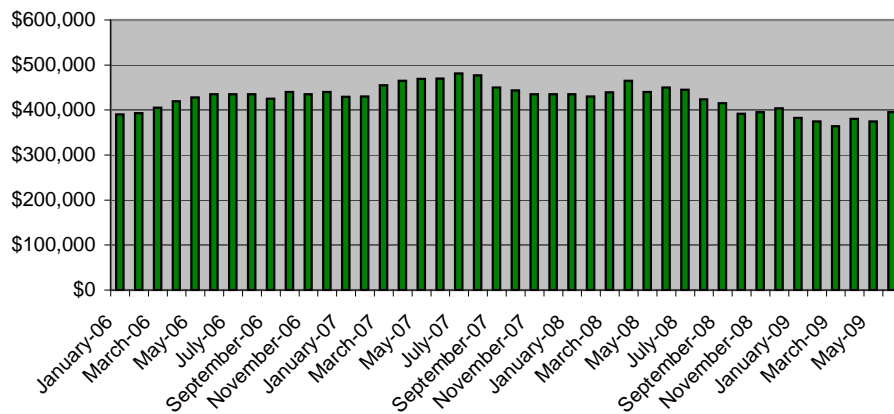
Residential Inventory

(Total active listings unsold)



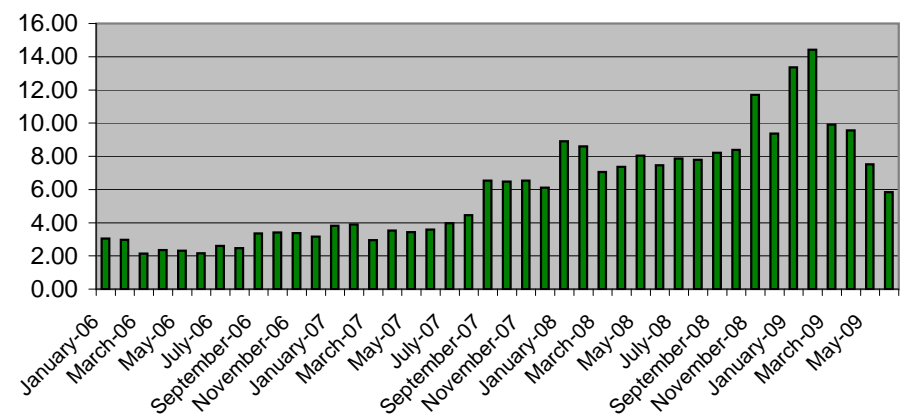
Residential Median Price

(Half sold for more / half sold for less)



Months Supply

(Current Active Inventory / Monthly Completed Sales Rate)



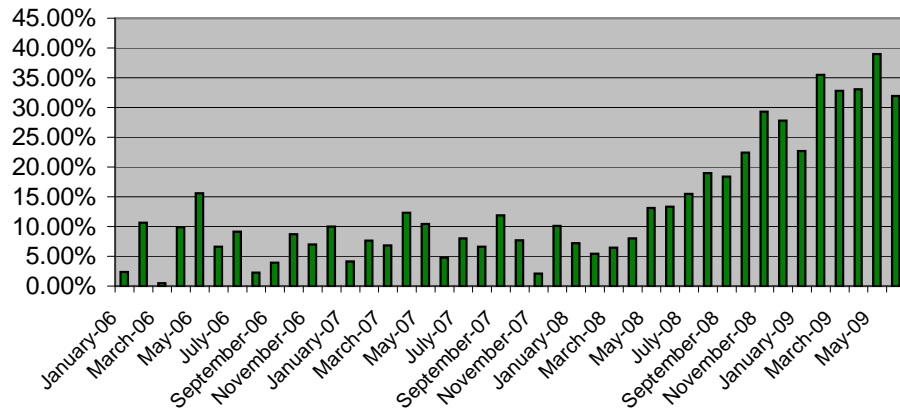
King County Residential Sales Statistics:

(source NWMLS monthly statistical reports; charts and interpretation are by Chuck Reiling and are not reviewed or verified by NWMLS)

January 2006 - June 2009

Page 2 of 2

Fall-Out Ratio - Pending vs Closed
(2-month running average)



Days On Market
(Average number of days to sell a home)

