

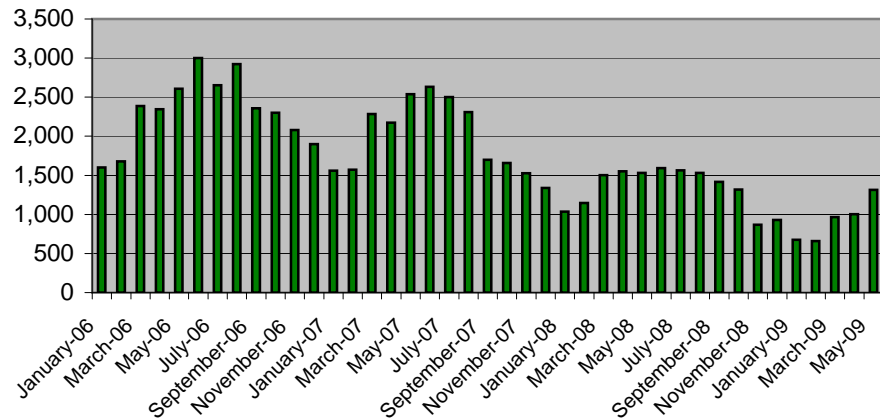
# King County Residential Sales Statistics:

Source: NWMLS monthly statistical reports

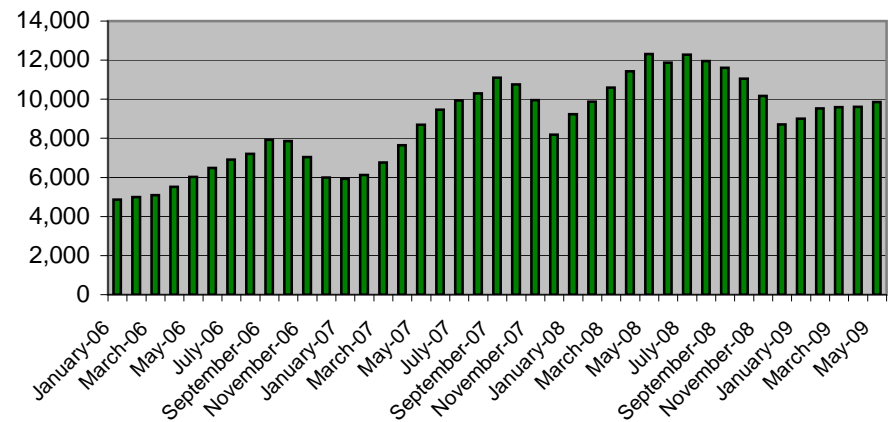
January 2006 - May 2009

Page 1 of 2

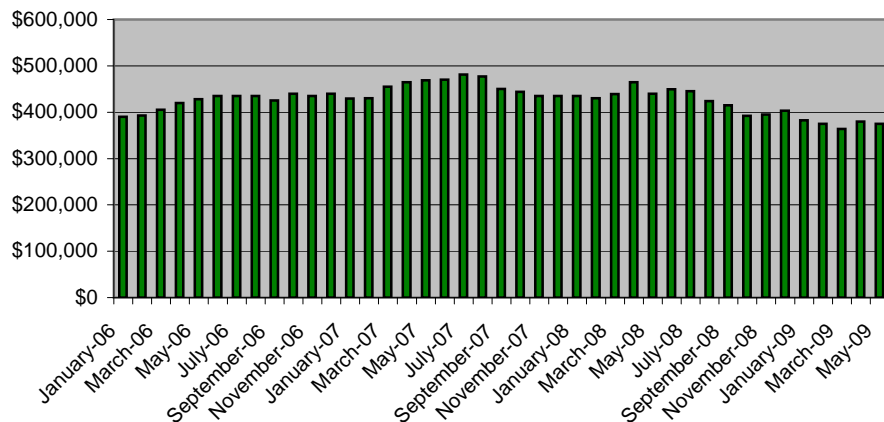
**Residential Closed Sales**  
(Number of homes sold each month)



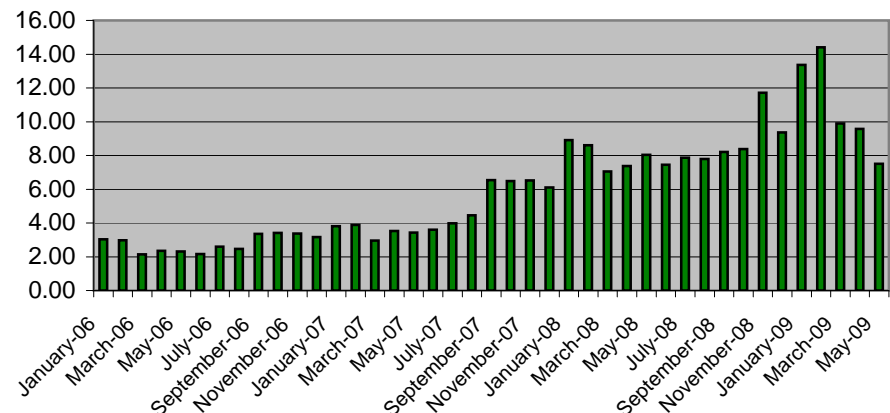
**Residential Inventory**  
(Total active listings unsold)



**Residential Median Price**  
(Half sold for more / half sold for less)



**Months Supply**  
(Current Active Inventory / Monthly Completed Sales Rate)



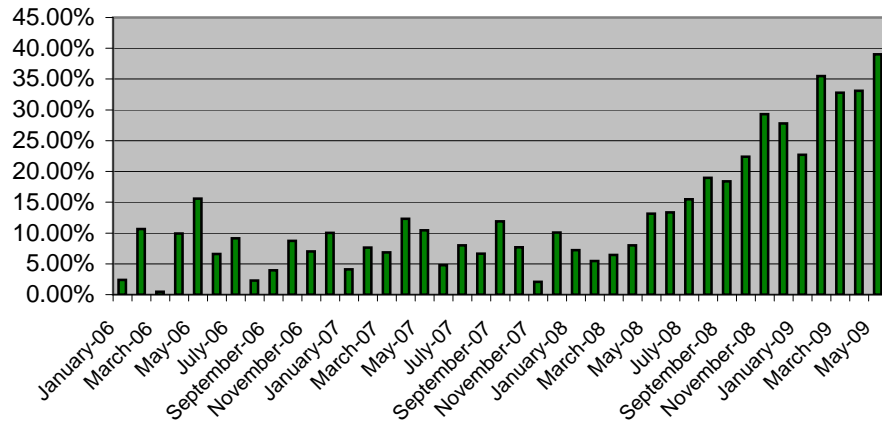
# King County Residential Sales Statistics:

Source: NWMLS monthly statistical reports

January 2006 - May 2009

Page 2 of 2

### Fall-Out Ratio - Pending vs Closed ( 2-month running average )



### Days On Market (Average number of days to sell a home)

